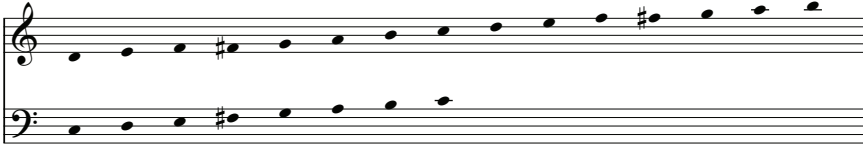


To Gale Manor, the Youth Choir, and the Handchimes
of Alexandria Presbyterian Church, Alexandria, Virginia
for Easter Sunday, 2014

Just As He Said!

3 octaves

Optional handbells used: 23*



*The treble clef of the handbell part may be played alone if a simpler alternative is preferred.

Trevor Manor
Based on Matthew 28:6, Luke 24:1-12, John 20:19-21

Trevor Manor

Brightly (♩. = 96)

Handbells* (optional) *mf* *cresc.*

Brightly (♩. = 96)

Piano *mf* *with pedal*

*A handbell part is available, code CGB890.

Copyright © 2015 Choristers Guild. All rights reserved. Printed in U.S.A.
Reproduction of all or any portion in any form is prohibited without permission of the publisher.

The copying of this music is prohibited by law and is not covered by CCLI, LicenSing, or OneLicense.net.

5

8^{va}
5
3
1 5
1 5 1
4
2

f

Red.

sost.

Detailed description: This system contains measures 5 through 8. The top staff (treble clef) begins with a piano dynamic *f* and features a melodic line with a fermata over measures 5 and 6. The bottom staff (bass clef) provides harmonic support with chords and a melodic line. A first ending bracket labeled "8^{va}" spans measures 7 and 8, with fingering numbers 5, 3, 1, 5, 1, 5, 1, 4, 2 written above the notes. The dynamic *f* is present in both staves. The word "Red." is written below the bass staff at the start of measure 7, and "sost." is written below the bass staff at the start of measure 8.

9

mf

mf

Detailed description: This system contains measures 9 through 12. The top staff (treble clef) has a piano dynamic *mf* and consists of sustained chords. The bottom staff (bass clef) has a piano dynamic *mf* and features a rhythmic pattern of eighth notes in the right hand and quarter notes in the left hand.

13

dim.

dim.

Detailed description: This system contains measures 13 through 16. The top staff (treble clef) has a piano dynamic *dim.* and consists of sustained chords. The bottom staff (bass clef) has a piano dynamic *dim.* and features a rhythmic pattern of eighth notes in the right hand and quarter notes in the left hand.

17

mp

Unison
mf

Wom - en brought their spi - ces to the grave at break of dawn,

mp

21

But the stone was rolled a - way and Je - sus' bod - y gone.

25

An - gels bright as light - ning told them, "Do not be a - fraid;

29

Weep no more, but come and see the place where He was laid.

mp *cresc.*

cresc.

33

Why do you seek the liv-ing a-mong the

37

dead? He is not here, for re - mem - ber what He