

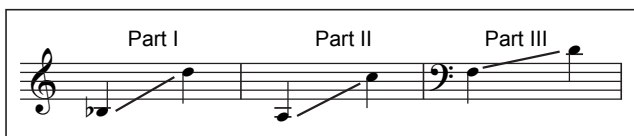
Over the Sea to Skye

3

Three-part Mixed* and Piano with optional Violin**

Words by
Robert Louis Stevenson, alt.

Scottish Folk Song
Arranged by Ruth Elaine Schram



1 Wistfully (♩ = ca. 48)

Musical notation for the piano accompaniment, measures 1-3. The music is in 6/8 time and B-flat major. The piano part is marked *mp* and includes the instruction "+ Vln.". The melody is in the right hand, and the bass line is in the left hand.

Musical notation for the piano accompaniment, measures 4-6. The music is in 6/8 time and B-flat major. The piano part is marked *mp* and includes the instruction "+ Vln.". The melody is in the right hand, and the bass line is in the left hand.

Musical notation for the vocal parts, measures 7-9. The music is in 6/8 time and B-flat major. The vocal parts are labeled I, II, and III. The piano part is marked *mp* and includes the instruction "- Vln.". The lyrics are: "Sing me a song of a lass that is gone,"

Musical notation for the piano accompaniment, measures 10-12. The music is in 6/8 time and B-flat major. The piano part is marked *mp* and includes the instruction "- Vln.". The melody is in the right hand, and the bass line is in the left hand.

Performance time: ca. 3:00

* Also available: SSA (CGE53); Performance/Accompaniment CD (CGECD27).

** Violin part is on pages 14–15.

Copyright © 2015 Choristers Guild. All rights reserved. Printed in U.S.A.

Reproduction of all or any portion in any form is prohibited without permission of the publisher.

The copying of this music is prohibited by law and is not covered by CCLI, LicenSing, or OneLicense.net.

9

I
II

say, could that lass be I?

III

11

I
II

mp Mer - ry of soul she sailed on a day

III

13

I
II

o - ver the sea to Skye.

III

15 *mf*

I
II

Bil - low and breeze, is - lands and seas,

III *mf*

+ Vln. *mf*

17

I
II

moun - tains of rain and sun;

III

19

I
II

All that was good, all that was fair,

III