

CGE128

Three-part Mixed

Also available: Two-part (CGE129); P/A CD (CGECD55)

**SING!** edited by **Mary Lynn Lightfoot**

DISTINCTIVE CHORAL MUSIC FOR CLASSROOM, CONCERT AND FESTIVAL



choristersguild

# Tafta Hindi

Arranged by  
**Greg Gilpin**



[www.choristersguild.org](http://www.choristersguild.org)

## Performance Notes

*Tafta Hindi* is a folk song known in various forms from the Middle East. The text in this arrangement is classic Arabic. The translation is poetic but very close to what is being sung in the Arabic language. I worked with my good friend Melham Gharzeddine, who is Lebanese, speaks Arabic and is familiar with this folk song, to create the English translation and proper Arabic text.

The story is of a gentleman selling Indian muslin, taffeta and other pretty materials and wares for women to buy. The salesman travels from town to town, house to house and while he is presenting his beautiful items, he flirts with the pretty women who are shopping. This makes for a very playful interpretation of the music and text.

I encourage you to listen to other Middle Eastern folk songs and to consider adding some simple percussion instruments for your performance of this piece. *Tafta Hindi* should be sung with a bounce that hints of the flirtation between the salesman and his buyers. Bright and fun!

*Greg Gilpin*

## Translation

Tafta hindi,  
Tafta hindi,  
Shash hariri ya banat.

*Indian taffeta,  
Indian taffeta,  
Silk and linen I sell here.*

Iftahili ya sabiya,  
Endi bida lil sit-tat.

*Open (the door) for me, pretty girls,  
I have goods to sell to you.*

## Pronunciation

Tafta hindi  
*Tahf-tah hihn-dee*

Shash hariri ya banat  
*Shahsh hah-ree-ree yah bah-naht*

Iftahili ya sabiya  
*Ihf-tah-hih-lee yah sah-bee-yah*

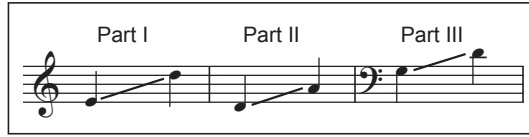
Endi bida lil sit-tat.  
*Ehndee bee-dah lihl siht-taht*

# Tafta Hindi

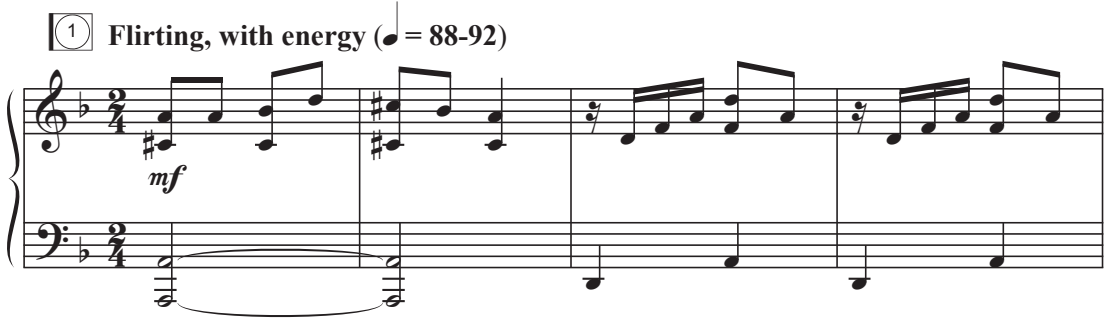
Three-part Mixed and Piano\*

Trad., alt.

Middle Eastern Folk Song  
Arranged by Greg Gilpin



① Flirting, with energy (♩ = 88-92)



5 *mf*

I Taf - ta hin - di, taf - ta hin - di, shash ha - ri - ri ya ba - nat.

II *mf*

II Taf - ta hin - di, taf - ta hin - di, shash ha - ri - ri ya ba - nat.

III *mf*

III Taf - ta hin - di, taf - ta hin - di, shash ha - ri - ri ya ba - nat.

Piano accompaniment for the second section, continuing from the first section. It features the same instrumental parts as the first section.

Performance time: ca. 1:50

\*Also available: Two-part (CGE129); Performance/Accompaniment CD (CGECD55).

Copyright © 2016 Choristers Guild. All rights reserved. Printed in U.S.A.  
Reproduction of all or any portion in any form is prohibited without permission of the publisher.

The copying of this music is prohibited by law and is not covered by CCLI, LicenSing, or OneLicense.net.

9

I  
Taf - ta hin - di, taf - ta hin - di, shash ha - ri - ri ya ba - nat.

II  
Taf - ta hin - di, taf - ta hin - di, shash ha - ri - ri ya ba - nat.

III  
Taf - ta hin - di, taf - ta hin - di, shash ha - ri - ri ya ba - nat.

13 *mp*

I  
If - ta - hi - li en - di bi - da — lil sit - tat.

II  
*mp*  
ya sa - bi - ya, en - di bi - da — lil sit - tat.

III  
*mp*  
If - ta - hi - li en - di bi - da lil sit - tat.

*mp*