

Abide with Me

Handbell Duet or Trio

3 octaves
Handbells used: 8

Part I

Handbells used: 9

Part II

Handbells used: 9

Part III*

EVENTIDE
William H. Monk, 1823-1889
arr. Cathy Mokebust (ASCAP)

Calmly (♩ = c. 76)

1 4 5 6 7 8

Handbell Duet or Trio

9 10 11 12 13 14

* Part III is optional.

Separate handbell parts are found on pages 6-11.

Piano accompaniment is found on page 12. Mp3 accompaniment tracks are also available: piano only, code CGBD138a; piano and flute, code CGBD138apf. The tracks are designed to work with both the solo and duet/trio versions.

Optional flute part is found on page 22.

A solo version is available separately (code CGBD138) and in the collection, *Sacred Solos for Bell Tree, Set 1: Lent, Easter, Pentecost and General Hymns* (code CGB1203).

Handbell notation for measures 15-20. Part I (treble clef) has notes: 15 (G4, A4), 16 (B4), 17 (C5), 18 (B4, A4), 19 (G4, F4), 20 (E4). Part II (treble clef) has notes: 15 (F4, E4), 16 (D4), 17 (C4), 18 (B3, A3), 19 (G3, F3), 20 (E3). Part III (bass clef) has notes: 15 (C3), 16 (B2), 17 (A2), 18 (G2), 19 (F2), 20 (E2).

Handbell notation for measures 21-29. Measures 21-24: Part I (treble clef) has notes: 21 (G4, A4), 22 (B4), 23 (C5), 24 (B4, A4). Measure 25: Part I has a whole rest. Measures 26-28: Part I has a whole rest. Measure 29: Part I has notes (G4, A4). Part II (treble clef) has notes: 21 (F4, E4), 22 (D4), 23 (C4), 24 (B3, A3). Measure 25: Part II has a whole rest. Measures 26-28: Part II has a whole rest. Measure 29: Part II has notes (G3, F3). Part III (bass clef) has notes: 21 (C3), 22 (B2), 23 (A2), 24 (G2). Measure 25: Part III has a whole rest. Measures 26-28: Part III has a whole rest. Measure 29: Part III has notes (F2, E2). Dynamics: *mp* for Part I, *f* for Part II, and *mf* for Part III.

Handbell notation for measures 30-34. Part I (treble clef) has notes: 30 (G4, A4), 31 (B4), 32 (C5), 33 (B4, A4), 34 (G4, F4). Part II (treble clef) has notes: 30 (F4, E4), 31 (D4), 32 (C4), 33 (B3, A3), 34 (G3, F3). Part III (bass clef) has notes: 30 (C3), 31 (B2), 32 (A2), 33 (G2), 34 (F2, E2).

Abide with Me

Duet or Trio

Part I

3 octaves

Handbells used: 8



EVENTIDE

William H. Monk, 1823-1889
arr. Cathy Moglebust (ASCAP)

Calmly (♩ = c. 76)

1 4 5 6 7

8 9 10 11

12 13 14 15

16 17 18 19

20 21 22 23

24 25 29 30

31 32 33 34

mf

mp

Abide with Me

Duet or Trio

Part II

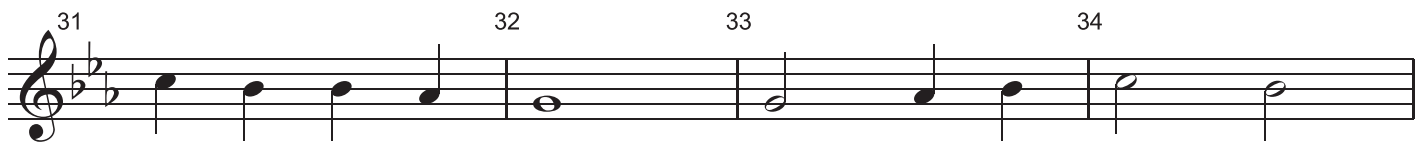
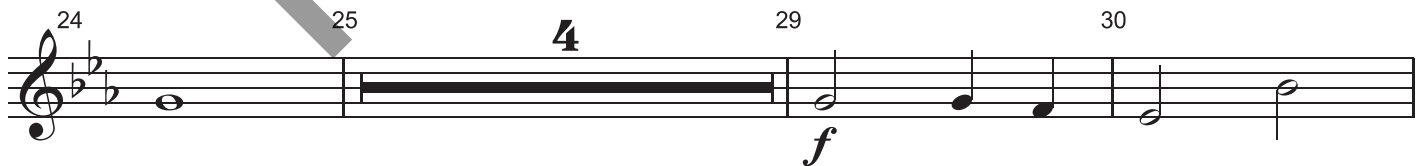
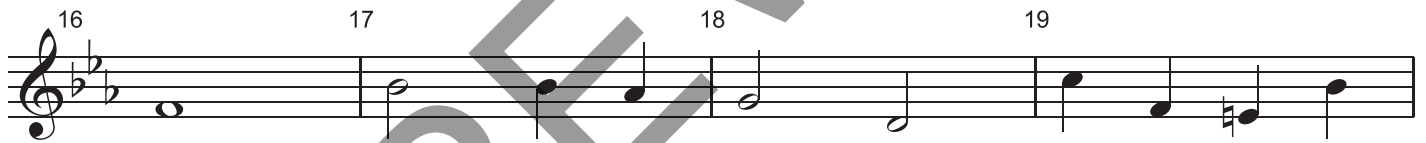
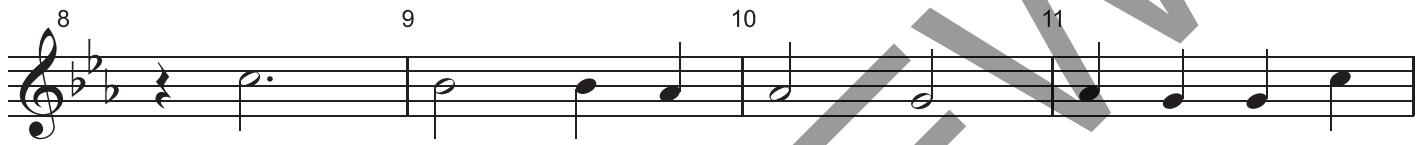
Handbells used: 9



Calmly ($\text{♩} = \text{c. } 76$)

EVENTIDE

William H. Monk, 1823-1889
arr. Cathy Moglebust (ASCAP)



Abide with Me

Duet or Trio

Part III

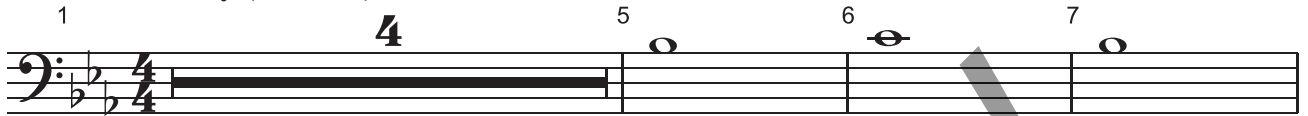
(optional)

Handbells used: 9

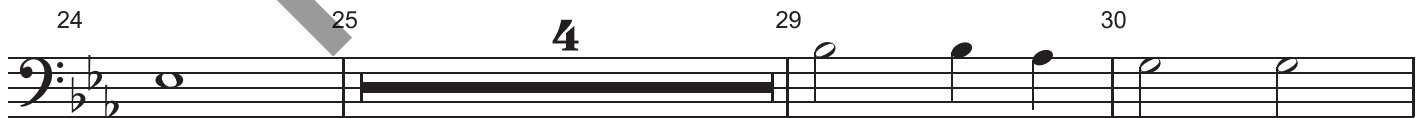
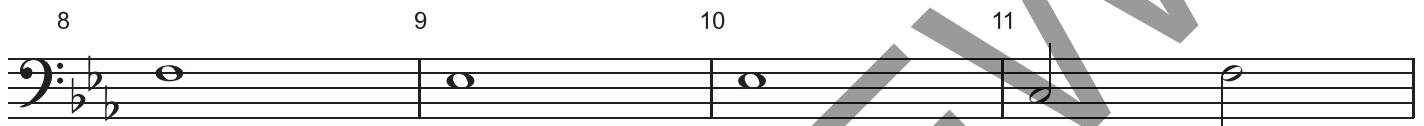


EVENTIDE
William H. Monk, 1823-1889
arr. Cathy Moglebust (ASCAP)

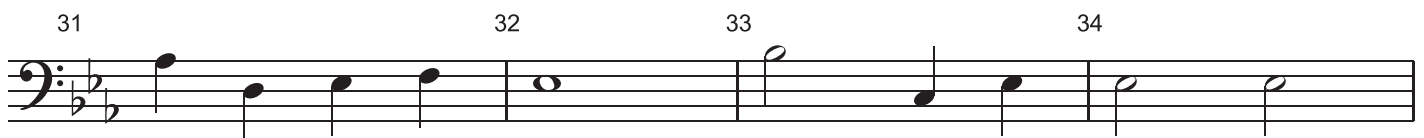
Calmly (♩ = c. 76)



mf



mf



Abide with Me

Handbell Duet
or Trio

3 octaves
Handbells used: 17, (26)

optional

EVENTIDE
William H. Monk, 1823-1889
arr. Cathy Moglebust (ASCAP)
piano by David Moglebust

1 **Calmly** (♩ = c. 76) **2** **3**

Piano *mp*

Pedal harmonically

Flute (optional) *mp*

Handbell Duet or Trio I II III*

4 **5** **6**

Piano *mf*

* Part III is optional.

The image displays a musical score for the piece "Abide with Me," specifically page 2. The score is arranged for three parts: Flute (Fl.), Handbell Duet or Trio (I, II, III), and Piano (Pno.).

- Flute (Fl.):** The flute part begins at measure 7 with a melodic line that includes a slur over measures 7 and 8. It concludes at the end of the page.
- Handbell Duet or Trio (I, II, III):** The handbell parts are arranged in three staves. Part I (treble clef) and Part II (treble clef) play chords and melodic fragments, while Part III (bass clef) provides a bass line. Measure numbers 7, 8, 9, 10, 11, 12, 13, 14, and 15 are indicated above the staves.
- Piano (Pno.):** The piano accompaniment is shown in grand staff notation (treble and bass clefs). It features a steady accompaniment with chords and moving lines in both hands.

A large, semi-transparent watermark reading "PREVIEW" is oriented diagonally across the center of the page, from the bottom-left towards the top-right.

16 17 18

I II III

Pno.

19 20 21

I II III

Pno.

22 23 24

Fl. *mp*

I II III

Pno.