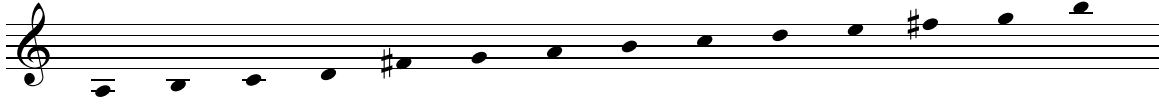


Still, Still, Still

Handbell Solo

2 or 3 octaves
Handbells used: 13, (14)

optional



STILL, STILL, STILL
Traditional German carol
arr. Cathy Moglebust (ASCAP)
piano arr. David Moglebust

Gently (♩ = ca. 66-76)

4 5 6

7 8 9 10

11 12 13

14 15 16

17 18 19 20

mf *f* *mf*

Piano accompaniment is found on page 4.

Also available for download at www.choristersguild.org:

Handbell duet or trio version and piano, code CGBD126. (The optional string parts and accompaniment tracks are for both the solo and duet/trio versions.)

Optional reproducible parts for 2 violins, viola, violoncello, contrabass, electronic keyboard string reduction, and full score, code CGRP63.

Piano mp3 accompaniment track, code CGBD125a.

String ensemble mp3 accompaniment track, code CGBD125as.

String ensemble and piano mp3 accompaniment track, code CGBD125aps.

Still, Still, Still

2 or 3 octaves
Handbells used: 13, (14)



STILL, STILL, STILL
Traditional German carol
arr. Cathy Moglebust (ASCAP)
piano arr. David Moglebust

Gently (♩ = ca. 66-76)

Handbell Solo

Piano *mp*

Pedal harmonically

1 2 3 4 5 6 7 8

The piano accompaniment is written in 4/4 time with a key signature of one sharp (F#). It consists of three systems of staves. The first system (measures 1-2) features a Handbell Solo on a single staff and a Piano accompaniment on two staves. The piano part has a melody in the right hand and a harmonic pedal in the left hand. The second system (measures 3-5) continues the piano part, with a dynamic marking of *mf* at the start of measure 5. The third system (measures 6-8) concludes the piano part. A large, diagonal watermark reading "PREVIEW" is overlaid across the entire piano accompaniment section.

9 10 11

Musical notation for measures 9, 10, and 11. The system includes a single treble clef staff for the handbell solo and a grand staff (treble and bass clefs) for the piano accompaniment. The key signature is two sharps (F# and C#). Measure 9 shows the handbell solo starting with a quarter note G4, followed by quarter notes A4, B4, and C5. The piano accompaniment features a rhythmic pattern of eighth and sixteenth notes.

12 13 14

f

mf

Musical notation for measures 12, 13, and 14. The handbell solo continues with quarter notes D5, E5, and F#5. Dynamic markings include *f* (forte) in measure 12 and *mf* (mezzo-forte) in measure 13. The piano accompaniment provides harmonic support with chords and moving lines.

15 16 17

mf

mp

Musical notation for measures 15, 16, and 17. The handbell solo features quarter notes G4, A4, and B4. Dynamic markings include *mf* (mezzo-forte) in measure 17 and *mp* (mezzo-piano) in measure 17. The piano accompaniment continues with a steady rhythmic accompaniment.

18 19 20

Musical notation for measures 18, 19, and 20. The handbell solo concludes with quarter notes C5, B4, and A4. The piano accompaniment provides a final harmonic setting for the piece.