

CGE583

SA

Also available: Accompaniment mp3 (CGE583a)

**SING!** edited by **Victor C. Johnson**

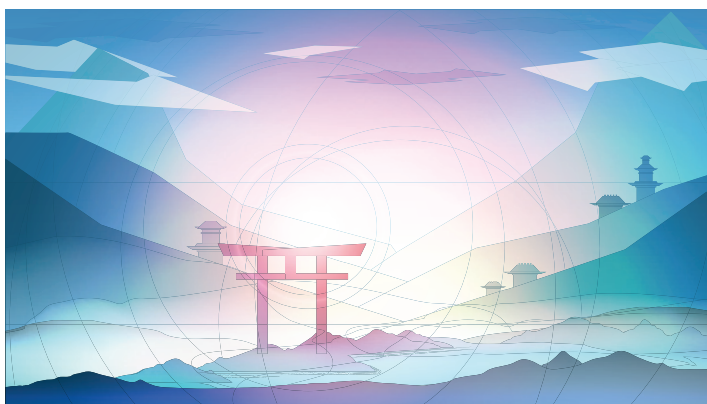
DISTINCTIVE CHORAL MUSIC FOR CLASSROOM, CONCERT AND FESTIVAL



choristersguild

# Aki to Fuyu

Andrew Jacobson



[www.choristersguild.org](http://www.choristersguild.org)

## Pronunciation and Translation

### In the Coldness of the Night

Sayuru yo no

*SAY-oo-roo yoh noh*

Yuki no shizuku wa

*YOO-ki noh she-ZOO-koo wah*

Oto Tatete

*OH-toh ta-TEH-teh*

Noki no Taruhi Ni

*NOH-ki noh ta-ROO-hee nee*

Otsuru tsukikage

*oh-TSOO-roo tsoo-key-KAH-geh*

In the coldness of the night

Snow is dripping (like droplets from an icicle)

Makes a sound

Dripping from the icicles on the eaves

With the falling moonbeams

### Up Above the Winds

Fukishiori

*fook-e-she-OH-ree*

Nowaki o Narasu

*noh-WAH-key oh nah-RAH-soo*

Yudachi no

*you-DAH-chee noh*

Kaze no ue

*KAH-zeh noh you-uh*

Komo yo konaha yo

*KOH-moh yoh koh-NAH-ha yoh*

Up above the autumn sounds

of the passing evening shower

Roaring through the fields

Above the wind you can hear

You clouds! You leaves!

# Aki to Fuyu

## (Two Songs of the Seasons)

SA and Piano with Violin\*

Words by  
Secretary Shōtetsu (1381-1459), alt.

Music by  
Andrew Jacobson

Musical notation for Soprano and Alto parts. The Soprano part is on a treble clef staff with a key signature of one sharp (F#) and a 4/4 time signature. The Alto part is on a bass clef staff with the same key signature and time signature. Both parts show a simple melodic line with a few notes and rests.

### I. In the Coldness of the Night

Simply (♩ = ca. 63)

Musical score for 'In the Coldness of the Night'. The score is in 4/4 time with a key signature of one sharp (F#). It features a piano accompaniment and vocal parts for Soprano and Alto. The piano part starts with a *p* dynamic and includes a 'pedal harmonically' instruction. The vocal parts enter at measure 5 in unison with an *mp* dynamic. The lyrics are: 'Sa - yu - ru - yo - no. Yu - ki no shi - zu - ku - wa.' The score includes a violin part starting at measure 8, marked '+Vln.'. A large 'PREVIEW' watermark is overlaid on the score.

Performance time: ca. 2:30

\*Also available: Accompaniment mp3 (CGE583a).

Violin part is on pages 14-15.

Copyright © 2024 Choristers Guild. All rights reserved. Printed in U.S.A.  
Reproduction of all or any portion in any form is prohibited without permission of the publisher.

The copying of this music is prohibited by law and is not covered by any license subscription.

CGE583

11 S  
Sa - yu - ru — yo —

A  
Sa - yu - ru — yo —

13  
no. Yu - ki no shi -

no. Yu - ki no shi -

15 *mf* 3  
zu - ku — wa. O - to ta -

*mf*  
zu - ku - wa. O -

-Vln.

17 *p*  
te - te,  
to ta - te - te,  
*dim.* +Vln. *p* -Vln. *cresc.*

19 *mf*  
o - to ta - te - te no - ki  
*mf*  
o - to ta - te - te  
*mf*

21 *p*  
no ta - ru - hi - ni.  
no - ki no ta - ru - hi ni.  
*dim.* *p* *cresc.* +Vln.