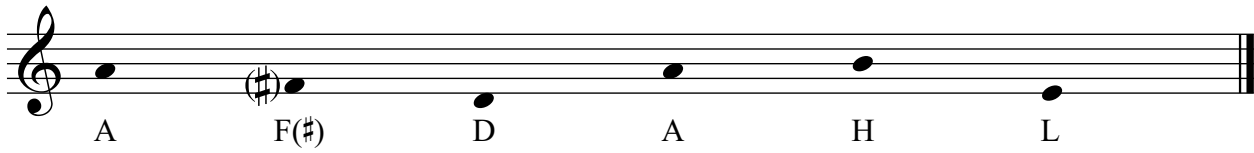


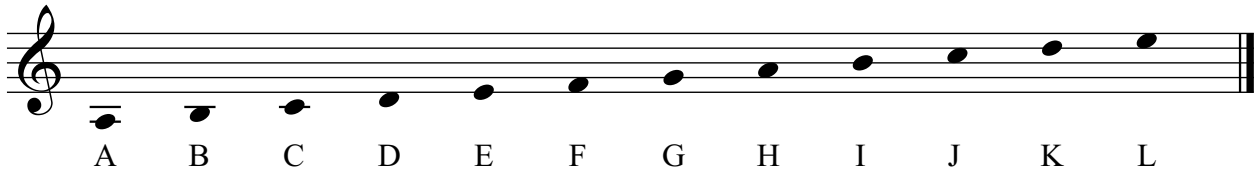
Composer's Notes

I have used the following notes to create a melodic line based on Lee Afdahl's name.



In German music notation, H is B \sharp and B is B \flat .

This is how the note "E" corresponds to the letter "L".



Commissioned in honor of Lee J. Afdahl's 20 years of dedicated service
 at First Presbyterian Church to the glory of God through music.
 September 25, 2011 – Rochester, Minnesota

Exultant Variations

(Afdahl Variations)

3, 4, 5 or 6 octaves

Handbells used: 37, (47), (56), (60)

3 or 5 octaves

Handchimes used: 18, (20)

3 octave choirs omit notes in ().
 4 octave choirs omit notes in [].
 *A3 handchime not used in 4 octave version

Michael Helman

Joyfully (♩ = 100-108)

Copyright © 2013 Choristers Guild. All rights reserved. Printed in U.S.A.
 Reproduction of all or any portion in any form is prohibited without permission of the publisher.

The copying of this music is prohibited by law and is not covered by CCLI, LicenSing, or OneLicense.net.

Musical notation for measures 4, 5, and 6. The piece is in D major (two sharps). Measure 4 features a treble clef with a series of chords and a bass line. Measure 5 continues the bass line with a treble clef accompaniment. Measure 6 shows a continuation of the bass line and treble accompaniment.

Musical notation for measures 7, 8, 9, and 10. Measure 7 includes a treble clef with chords and a bass line. Measure 8 features a treble clef with a '7' fingering and a 'R' (ritardando) marking. Measure 9 includes a treble clef with chords and a '9' fingering, with a 'mf' (mezzo-forte) dynamic marking. Measure 10 continues the treble and bass lines.

Musical notation for measures 11, 12, and 13. Measure 11 features a treble clef with chords and a bass line. Measure 12 includes a treble clef with a '12' fingering and a '13' fingering. Measure 13 features a treble clef with chords and a '13' fingering, with a 'f' (forte) dynamic marking.

Musical notation for measures 14, 15, and 16. Measure 14 features a treble clef with chords and a bass line. Measure 15 includes a treble clef with chords and a '15' fingering. Measure 16 features a treble clef with chords and a '16' fingering, ending with a double bar line.

17 18 19 20

mf

21 22 23 24

mp TD

25 26 27

mf R

28 29 30