



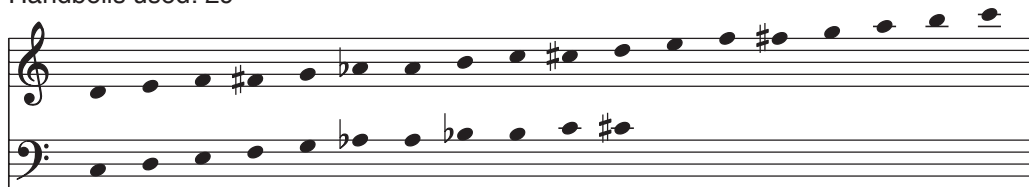
*Let Us
Break
Bread
Together*

Let Us Break Bread Together

Handbells and optional Flute

3 octaves

Handbells used: 29



African-American spiritual
arr. Dan R. Edwards

Prayerfully (♩ = 76-80)

Piano accompaniment for the first system of 'Let Us Break Bread Together'. The music is in 4/4 time and begins with a piano (*pp*) dynamic. The right hand plays a melody of eighth notes, while the left hand provides a harmonic accompaniment of chords. The system is divided into measures 1 through 6, with measure 6 containing a long note with a slur over it.

Piano accompaniment for the second system of 'Let Us Break Bread Together'. The music continues from the first system, with measures 7 through 9. The right hand plays a melody of eighth notes, while the left hand provides a harmonic accompaniment of chords. The system is divided into measures 7 through 9, with measure 9 containing a long note with a slur over it. The dynamic is marked *mp* (mezzo-piano).

Flute (optional)*

* Flute part on page 8.

Copyright © 2000 Choristers Guild. All rights reserved. Printed in U.S.A.
Duplication of all or any portion in any form is prohibited without publisher's permission.

10

10 11 12

mf *mp*

13

cresc. poco a poco

13 14 15

cresc. poco a poco

16

f

16 17 18

f

19

19

20

21

22

mp

p

22

23

24

mp

mf

mp

p

25

25

26

27

Detailed description: This musical score is for a piano and voice piece. It consists of three systems of staves. The first system (measures 19-21) features a vocal line in the upper staff and a piano accompaniment in the lower staff. The piano part has a steady eighth-note accompaniment in the right hand and a bass line in the left hand. The second system (measures 22-24) includes dynamic markings: *mp* (mezzo-piano) and *p* (piano) for the vocal line, and *mp*, *mf* (mezzo-forte), *mp*, and *p* for the piano accompaniment. The third system (measures 25-27) shows the vocal line with slurs and the piano accompaniment with chords and moving lines. The score is written in a common time signature and uses a key signature with one flat.

System 1, measures 28-30. The top staff (treble clef) begins at measure 28 with a half note G4, followed by a half note A4, and then a half note B4. The middle staff (treble clef) begins at measure 28 with a half note G4, followed by a half note A4, and then a half note B4. The bottom staff (bass clef) begins at measure 28 with a half note G3, followed by a half note A3, and then a half note B3. Measure 29 features a half note G4 in the top staff, a half note A4 in the middle staff, and a half note B3 in the bottom staff. Measure 30 features a half note G4 in the top staff, a half note A4 in the middle staff, and a half note B3 in the bottom staff.

System 2, measures 31-34. The top staff (treble clef) begins at measure 31 with a half note G4, followed by a half note A4, and then a half note B4. The middle staff (treble clef) begins at measure 31 with a half note G4, followed by a half note A4, and then a half note B4. The bottom staff (bass clef) begins at measure 31 with a half note G3, followed by a half note A3, and then a half note B3. Measure 32 features a half note G4 in the top staff, a half note A4 in the middle staff, and a half note B3 in the bottom staff. Measure 33 features a half note G4 in the top staff, a half note A4 in the middle staff, and a half note B3 in the bottom staff. Measure 34 features a half note G4 in the top staff, a half note A4 in the middle staff, and a half note B3 in the bottom staff. The dynamic *pp* is marked above measure 33, and *mf* is marked below measure 32. The instruction "(bring out melody)" is written above measure 32. The dynamic *mp* is marked below measure 33.

System 3, measures 35-37. The top staff (treble clef) begins at measure 35 with a half note G4, followed by a half note A4, and then a half note B4. The middle staff (treble clef) begins at measure 35 with a half note G4, followed by a half note A4, and then a half note B4. The bottom staff (bass clef) begins at measure 35 with a half note G3, followed by a half note A3, and then a half note B3. Measure 36 features a half note G4 in the top staff, a half note A4 in the middle staff, and a half note B3 in the bottom staff. Measure 37 features a half note G4 in the top staff, a half note A4 in the middle staff, and a half note B3 in the bottom staff. The dynamic *mp* is marked above measure 35, and *pp* is marked above measure 36. The dynamic *mp* is marked below measure 35, and *pp* is marked below measure 36.

38

38

39

40

mp

mf *p*

This system contains measures 38, 39, and 40. The top staff has rests in measures 38 and 39, followed by a melodic phrase in measure 40 marked *mp*. The middle staff has a complex chordal texture in measure 38, a continuation in measure 39, and a melodic line in measure 40 marked *mf* and *p*. The bottom staff has a simple bass line with quarter notes in measures 38 and 39, and half notes in measure 40.

41

f

41

42

43

f

This system contains measures 41, 42, and 43. The top staff has a melodic line in measure 41 marked *f*, followed by a phrase in measure 42, and a phrase in measure 43. The middle staff has a complex chordal texture in measure 41 marked *f*, a continuation in measure 42, and a phrase in measure 43. The bottom staff has a simple bass line with quarter notes in measure 41, and half notes in measures 42 and 43.

44

44

45

46

47

This system contains measures 44, 45, 46, and 47. The top staff has a melodic line in measure 44, followed by a phrase in measure 45, a phrase in measure 46, and a phrase in measure 47. The middle staff has a complex chordal texture in measure 44, a continuation in measure 45, a phrase in measure 46, and a phrase in measure 47. The bottom staff has a simple bass line with quarter notes in measure 44, and half notes in measures 45, 46, and 47.

48 49 50 51

mf

decresc. poco a poco

52 53 54

meno mosso *rit.*

decresc. poco a poco
meno mosso *rit.*

55 56 57 58

molto rit. *pp* *ppp*

molto rit. *pp* *ppp*

Let Us Break Bread Together

CGB227

\$4.50



African-American spiritual
arr. Dan R. Edwards

Prayerfully (♩ = 76-80)

7 8

mp

12

cresc. poco a poco

17

f

22

mp *p*

27

32

7 40

mp *f*

44

49

decresc. poco a poco

meno mosso

54

rit. *molto rit.* *pp* *ppp*

Copyright © 2000 Choristers Guild. All rights reserved. Printed in U.S.A.
CGB227 Duplication of all or any portion in any form is prohibited without publisher's permission.

Permission is granted to <name> to print and use <#> copies.
This digital file may not be forwarded or otherwise shared.