

LITTLE LAMB, WHO MADE THEE?

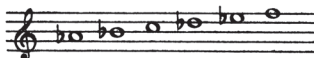
3

Unison, Keyboard, opt. Part for Six Handbells or Solo Instrument

William Blake (1757-1827)

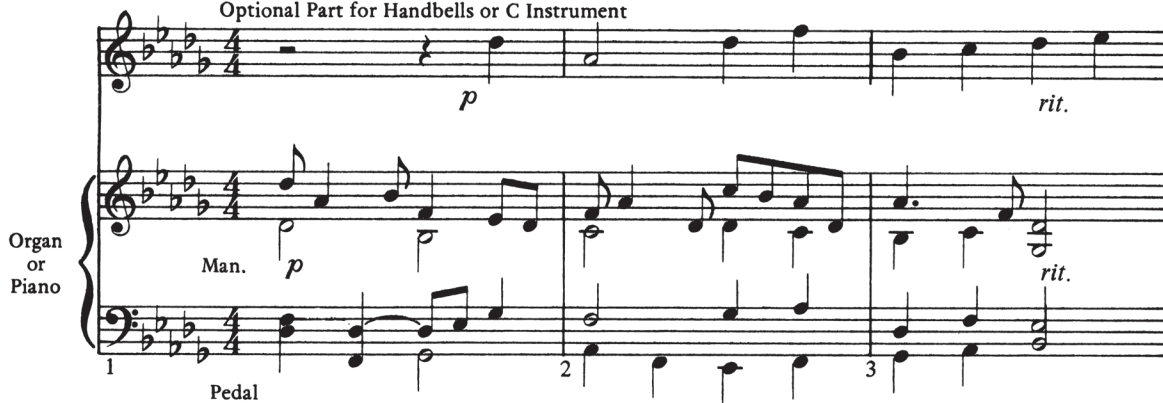
Hal H. Hopson

Bells Used:



Unhurried and expressive (♩ = ca. 66)

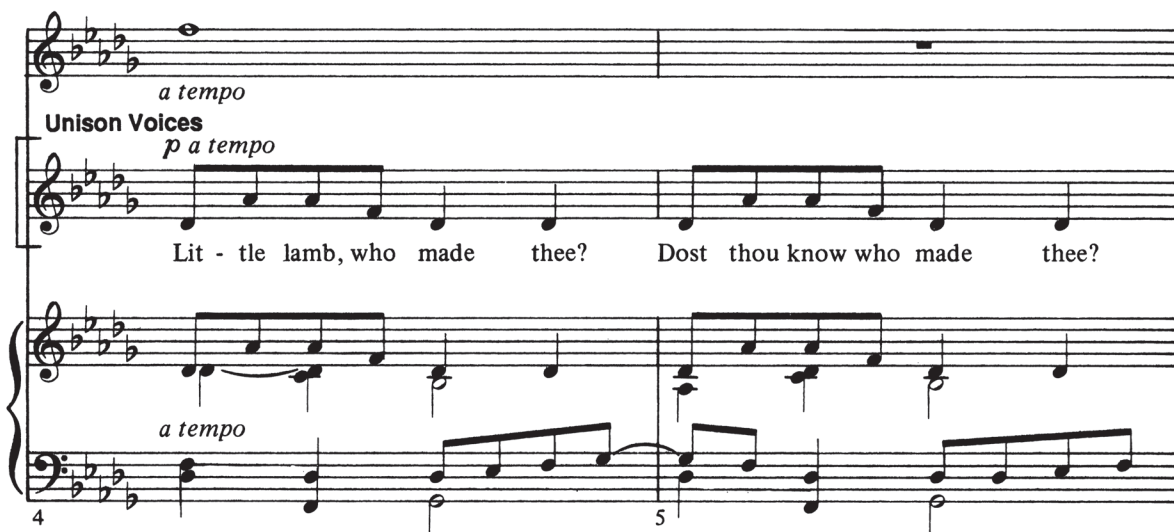
Optional Part for Handbells or C Instrument



Organ or Piano

Man. *p* *rit.*

Pedal

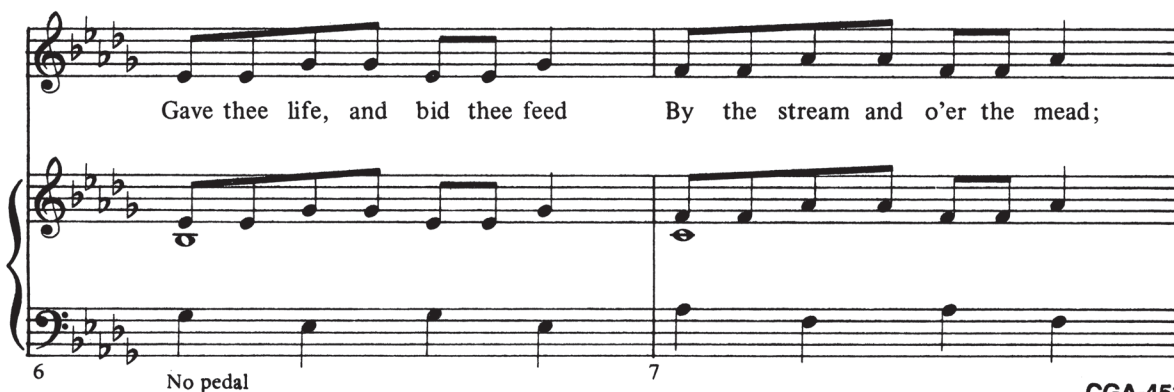


a tempo

Unison Voices
p a tempo

Lit - tle lamb, who made thee? Dost thou know who made thee?

a tempo



Gave thee life, and bid thee feed By the stream and o'er the mead;

No pedal

Copyright © 1988 Choristers Guild
All rights reserved

CGA-451

This is copyrighted material and therefore may not be copied nor reproduced in any portion or form without permission from the publisher.

Gave thee cloth - ing of de - light, Soft - est cloth - ing, wool - y bright;

Gave thee such a ten - der voice, Mak - ing all the vales re - joice?

rit. *ten.*

ten.

rit.

+ Pedal

a tempo *rit.*

Lit - tle lamb, who made thee? Lit - tle lamb, who made thee?

a tempo *rit.*

a tempo
(Handbells or C Instrument)

mp

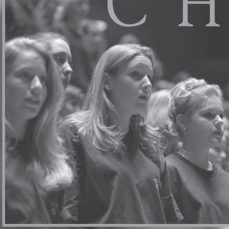
mp a tempo



choristers guild

Nurturing the Spiritual Growth of Children and Youth Through Music

CHILDREN



MUSIC

YOUTH



Join Choristers Guild and benefit from:

- Workshops for directors
- Choir festivals for children and youth
- Local chapter affiliation
- Publications and resources
- *The Chorister* - a journal of resources for music ministry
- Preview service of newly released Choristers Guild music
- Choral music
- Handbell music
- Musicals for children and youth
- Choir curricula
- Teaching resources
- Recruitment and promotional materials
- Choir awards



Email:

choristers@choristersguild.org

Web site:

www.choristersguild.org

Search our online catalog for help with your music needs:

www.choristersguild.org/catalog