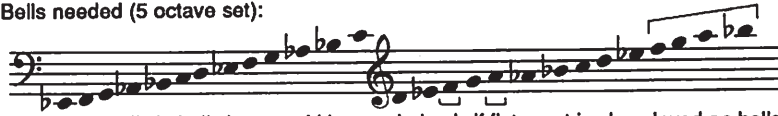


# Shepherds, Awake

Bells needed (5 octave set):



[Bracketed bells in bell chart would be needed only if flute part is also played on bells]

Michael Jothen

Michael Jothen

Light and dance-like ( $\text{♩} = 112$ )



Piano accompaniment for the first system, featuring a treble and bass clef with a forte ( $f$ ) dynamic.

Voices  $f$   
Shep-herds,a-wake, rise up this morn; in Beth - le - hem a babe is born!  
Piano accompaniment for the first vocal line, featuring a treble and bass clef.

*cresc. poco a poco*  
Shep-herds,a-wake, rise up this morn; in Beth - le - hem a babe is born!  
*cresc. poco a poco*  
Piano accompaniment for the second vocal line, featuring a treble and bass clef.

\* If flute is not available, keyboard (or bells) should play flute part.

Flute

Flute staff with rests.

Voices

*ff*

, *subito pp*

Vocal staff with notes and lyrics: Je-sus is born! Em - man - u - el!

Je-sus is born! Em - man - u - el!

Je-sus is born! Em - man - u -

Piano accompaniment staff with notes and dynamics: *ff*

Vocal staff with notes and dynamics: *pp* *ff*

el!

Em - man

- u -

el! Em -

Vocal staff with notes and dynamics: *ff*

Piano accompaniment staff with notes and dynamics: *ff*

Vocal staff with notes and dynamics: *ff*

man - u - el!

Je-sus is born! Em - man - u -

Vocal staff with notes and dynamics: *ff*

Piano accompaniment staff with notes and dynamics: *ff*