

SING!

edited by

Victor C. Johnson

DISTINCTIVE CHORAL MUSIC FOR CLASSROOM, CONCERT AND FESTIVAL



choristersguild

CGE578

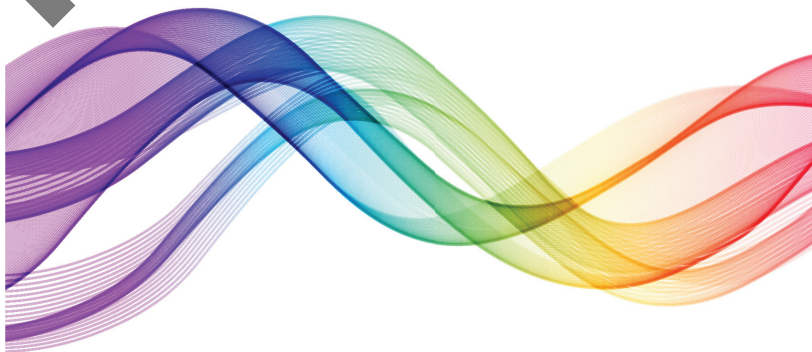
Also available: SATB (CGE576); Three-part Mixed (CGE577); TTB (CGE579);
Accompaniment mp3 (CGE576a)

SSA

Followers of the Lamb

Arranged by

Earlene Rentz



www.choristersguild.org

Followers of the Lamb

SSA and Piano* with Opt. Descant and Tambourine

Traditional

Traditional Shaker Song
Arranged by Earlene Rentz

Soprano I Soprano II Alto

With energy! (♩ = 100-108)

mf + Tamb.

5 Voices in Unison

mf
O

9

sis - ters, **ain't you hap - py, O sis - ters, ain't you hap - py, O

Performance time: ca. 2:30

*Also available: SATB (CGE576); Three-part Mixed (CGE577); TTB (CGE579);
Accompaniment mp3 (CGE576a).

Tambourine part is available for free download. Visit www.choristersguild.org and search for CGE576.

** May substitute *ain't* with *aren't*, if preferred.

Copyright © 2024 Choristers Guild. All rights reserved. Printed in U.S.A.
Reproduction of all or any portion in any form is prohibited without permission of the publisher.

The copying of this music is prohibited by law and is not covered by any license subscription.

13

sis - ters, ain't you hap - py, ye fol-low-ers of the Lamb. O

17 SI, SII

sis - ters, ain't you hap - py, O sis - ters, ain't you hap - py, O

A

sis - ters, ain't you hap - py, O sis - ters, ain't you hap - py, O

21

sis - ters, ain't you hap - py, ye fol-low-ers of the Lamb.

sis - ters, ain't you hap - py, ye fol-low-ers of the Lamb.

25

Sing on, — dance on, fol-low-ers of Em-man-u-el,

mf

Sing on, — dance on, fol-low-ers of Em-man-u-el,

29

sing on, — dance on, ye fol-low-ers of the Lamb.

sing on, — dance on, ye fol-low-ers of the Lamb.

33

Sing on, — dance on, fol-low-ers of Em-man-u-el,

f

Sing on, — dance on, fol-low-ers of Em-man-u-el,

f

37

sing on, — dance on, ye fol-low-ers of the Lamb!
 sing on, — dance on, ye fol-low-ers of the Lamb!

41

mf

45

SI *mp* Fol - low,
 SII *mp* Fol - low,
 A *mf* O breth - ren, ain't you hap - py, O