

CGE564

SSA

Also available: Three-part Mixed (CGE563); Accompaniment mp3 (CGE563a)

SING! edited by **Victor C. Johnson**

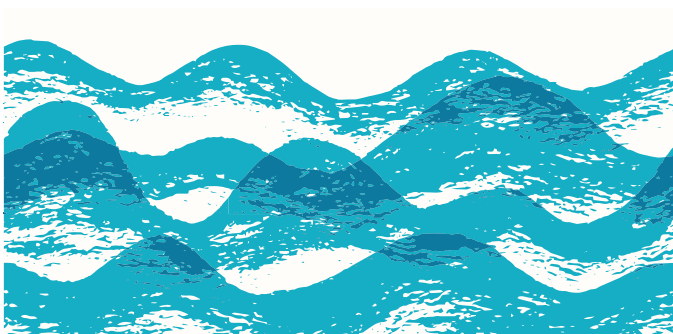
DISTINCTIVE CHORAL MUSIC FOR CLASSROOM, CONCERT AND FESTIVAL



choristersguild

I Must Go Down to the Sea

Earlene Rentz



www.choristersguild.org

PREVIEW

I Must Go Down to the Sea

3

SSA and Piano*

Words by
John Masefield (1878-1967), alt.

Music by
Earlene Rentz

Musical notation for Soprano I, Soprano II, and Alto parts. The notation shows three staves with notes and rests, indicating the vocal lines for each part.

Merrily (♩ = 60-66)
mf

Piano accompaniment notation for the first system, showing the right and left hand parts.

SI, SII
mf

Alto
mf

I must go down to the sea a - gain, to the lone - ly sea and the

I must go down to the sea a - gain, to the lone - ly sea and the

Vocal and piano notation for the main section, including lyrics for Soprano I, Soprano II, and Alto parts, and piano accompaniment.

Performance time: ca. 2:50

*Also available: Three-part Mixed (CGE563); Accompaniment mp3 (CGE563a).

Copyright © 2024 Choristers Guild. All rights reserved. Printed in U.S.A.
Reproduction of all or any portion in any form is prohibited without permission of the publisher.

The copying of this music is prohibited by law and is not covered by any license subscription.

CGE564

8

sky, And all I ask is a tall ship and a

sky, And all I ask is a tall ship and a

11

star to steer her by, And the wheel's kick, and the

star to steer her by, And the wheel's kick, and the

14

wind's song, and the white sail's shak - ing, a

wind's song, and the white sail's shak - ing, a

17

grey — mist on the sea's face and a grey dawn

grey — mist on the sea's face and a grey dawn

20

break - ing.

break - ing.

23

mp I must go down to the sea — for the call of the run - ning

mp I must go down to the sea — for the call of the run - ning