

CGE563

Three-part Mixed

Also available: SSA (CGE564); Accompaniment mp3 (CGE563a)

**SING!** edited by **Victor C. Johnson**

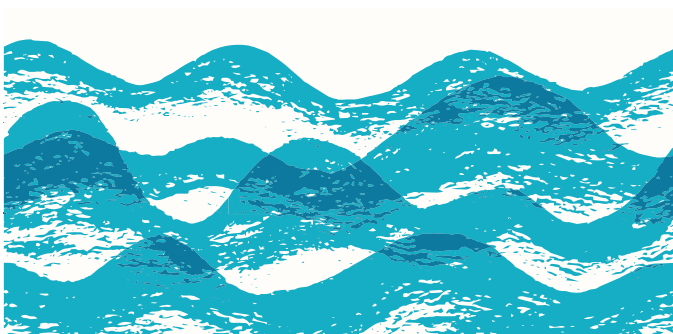
DISTINCTIVE CHORAL MUSIC FOR CLASSROOM, CONCERT AND FESTIVAL



choristersguild

# I Must Go Down to the Sea

Earlene Rentz



[www.choristersguild.org](http://www.choristersguild.org)

PREVIEW

# I Must Go Down to the Sea

3

Three-part Mixed and Piano\*

Words by  
John Masefield (1878-1967), alt.

Music by  
Earlene Rentz

A small musical notation box showing three parts: Part I (treble clef), Part II (treble clef), and Part III (bass clef). Each part shows a few notes on a staff.

Merrily (♩ = 60-66)

*mf*

Piano accompaniment notation for the first system, featuring a treble and bass clef with a 6/8 time signature. The music is marked *mf*.

5 *mf*

I  
II  
III

I must go down to the sea a - gain, to the lone - ly sea and the

*mf*

I must go down to the sea a - gain, to the lone - ly sea and the

Vocal and piano notation for the main section. It includes three vocal parts (I, II, III) and piano accompaniment. The lyrics are: "I must go down to the sea a - gain, to the lone - ly sea and the". The piano part is marked *mf*.

Performance time: ca. 2:50

\*Also available: SSA (CGE564); Accompaniment mp3 (CGE563a).

Copyright © 2024 Choristers Guild. All rights reserved. Printed in U.S.A.  
Reproduction of all or any portion in any form is prohibited without permission of the publisher.

The copying of this music is prohibited by law and is not covered by any license subscription.

CGE563

8

I  
II

sky, And all I ask is a tall ship and a

III

sky, And all I ask is a tall ship and a

11

I  
II

star to steer her by, And the wheel's kick, and the

III

star to steer her by, And the wheel's kick, and the

14

I  
II

wind's song, and the white sail's shak - ing, a

III

wind's song, and the white sail's shak - ing, a

17

I  
II

grey — mist on the sea's — face and a grey dawn

III

grey mist on the sea's — face and a grey dawn

20

I  
II

break - ing.

III

break - ing.

*mp*

23

I  
II

I must go down to the sea — for the call of the run - ning

III

I must go down to the sea — for the call of the run - ning

*mp*