

Together in Song

This fantastic new reproducible collection from creative writers Greg Gilpin, Victor C. Johnson and Mary Lynn Lightfoot features eight concert and festival selections for young and developing Two-part treble choirs. Featuring a variety of general concert works, spiritual arrangements, folk songs and multicultural offerings, you will find tried and true selections that are easily taught and easily learned for use throughout the school year.

The purchase of this collection includes digital accompaniment tracks, not only for aid in rehearsals, but also for performance use, if necessary.

We are assured that this practical, cost-saving collection will be a go-to resource for years to come, as it helps to showcase the artistry and musicality of your young singers.

The Publisher

Accompaniment Tracks for Digital Download

Access accompaniment tracks for all songs in this collection at:

bit.ly/togetherinsong

If you need assistance, email us at contact@choristersguild.org

Contents

A Jubilant Song - Victor C. Johnson	3
Rainsong - Mary Lynn Lightfoot	11
Little Innocent Lamb - Arranged by Greg Gilpin	20
Ezekiel Saw the Wheel - Arranged by Mary Lynn Lightfoot.....	29
Ubi Caritas - Victor C. Johnson	36
Tafta Hindi - Arranged by Greg Gilpin.....	43
If I Knew You - Mary Lynn Lightfoot.....	51
Sisi Kushangilia - Victor C. Johnson.....	58

A Jubilant Song

Two-part and Piano*

Words by Victor C. Johnson
and Traditional Latin

Music by
Victor C. Johnson



1 With energy (♩ = 126)

The main musical score consists of three systems. The first system is a piano introduction in 4/4 time, marked *f*. The second system continues the piano accompaniment, starting at measure 4. The third system introduces two vocal parts, I and II, starting at measure 7. Part I has the lyrics: "Can - ta - te Do - mi - no can - ti - cum no - vum." The piano accompaniment continues throughout the vocal entry.

Performance time: ca. 1:50

Copyright © 2018 Choristers Guild. All rights reserved. Printed in U.S.A.
Reproduction of all or any portion in any form is prohibited without permission of the publisher.

The original purchaser is granted permission to duplicate these pages. This is a non-transferable license.

9

I Lift up your voice— in ju - bi - lant song!

II

11

I Can - ta - te Do - mi - no can - ti - cum no - vum.

II

13

I Lift up your voice,— 2 sing and re - joice,— al - le -

II

15

I
lu - ia!

II
f Can - ta - te Do - mi - no can -

17

I

II
- ti - cum no - vum. Lift up your voice — in ju -

19

I
f Can - ta - te Do - mi - no can -

II
- bi - lant song! Can - ta - te Do - mi - no can -

Commissioned by the Nassau, NY, Music Educators Association's 2016 All-County Division II Chorus
in commemoration of their 80th Anniversary (1935–2015)

Rainsong

Two-part and Piano*

Words and Music by
Mary Lynn Lightfoot



7 With whimsy (♩ = 108-112)

mf

mf

mf

Rain, rain, — hear the gen - tle rhy - thm of the

Rain, rain, — hear the gen - tle rhy - thm of the

Performance time: ca. 2:10

Copyright © 2016 Choristers Guild. All rights reserved. Printed in U.S.A.
Reproduction of all or any portion in any form is prohibited without permission of the publisher.

The original purchaser is granted permission to duplicate these pages. This is a non-transferable license.

9

I
fall - ing rain, — the gen - tle, play - ful rhy - thm of the

II
fall - ing rain, — the gen - tle, play - ful rhy - thm of the

11

I
fall - ing rain — as it *f* taps up - on the win - dow pane. —

II
fall - ing rain — as it *f* taps up - on the win - dow pane. —

13

8

15 *mp*

I Rain, rain, — hear the gen - tle rhy - thm of the

II Rain, rain, — hear the rain. —

mp

17

I fall - ing rain, — the gen - tle, play - ful rhy - thm of the

II Rain, rain, — hear the rain. —

19 *mf*

I fall - ing rain — as it taps up - on the win - dow pane, —

II Rain, rain, — as it taps on the win - dow pane, —

mf

mf

Little Innocent Lamb

Two-part and Piano*

Traditional, alt.

Traditional Spiritual
Arranged by Greg Gilpin



13 Light and bright (♩ = ca. 126)

6 *p*

I Lit-tle Lamb, lit - tle Lamb, lit - tle in - no-cent Lamb,—

II *p*

Lit-tle Lamb, lit - tle Lamb, lit - tle in - no-cent Lamb,—

p

Performance time: ca. 2:30

Copyright © 2013, this edition © 2015 Choristers Guild. All rights reserved. Printed in U.S.A.
 Reproduction of all or any portion in any form is prohibited without permission of the publisher.

The copying of this music is prohibited by law and is not covered by CCLI, LicenSing, or OneLicense.net.

9

I
I'm a - gon - na love you 'til I die. — Lit - tle Lamb, lit - tle Lamb, lit - tle

II
I'm a - gon - na love you 'til I die. — Lit - tle Lamb, lit - tle Lamb, lit - tle

12

I
in - no - cent Lamb, — *cresc.* I'm a - gon - na love you 'til I die. — *mp* Lit - tle

II
in - no - cent Lamb, — *cresc.* I'm a - gon - na love you 'til I die. — *mp* Lit - tle

15

I
Lamb, lit - tle Lamb, lit - tle in - no - cent Lamb, — I'm a - gon - na love you

II
Lamb, lit - tle Lamb, lit - tle in - no - cent Lamb, — I'm a - gon - na love you

18

I 'til I die.— Lit-tle Lamb, lit-tle Lamb, lit-tle in-no-cent Lamb,—

II 'til I die.— Lit-tle Lamb, lit-tle Lamb, lit-tle in-no-cent Lamb,—

21 14

I I'm a-gon-na love you 'til I die.— *mf* Hyp-o-crite, hyp-o-crite,

II I'm a-gon-na love you 'til I die.—

24 *mp*

I tell you what he do, *mp* I'm a-gon-na love you 'til I die.— *mf*

II I'm a-gon-na love you 'til I die.— He'll

Ezekiel Saw the Wheel

Two-part, a cappella

Trad., alt.

Traditional Spiritual
Arranged by Mary Lynn Lightfoot

With energy (♩ = 92-96)

mf

Clap Snap

I
Way in the mid - dle,

II
Way in the mid - dle,

3

I
way in the mid - dle of the air! Way in the mid-dle,

II
way in the mid - dle of the air! Way in the mid-dle,

6

I
way in the mid - dle of the air! E -

II
way in the mid - dle of the air!

Performance time: ca. 1:25

Copyright © 2016 Choristers Guild. All rights reserved. Printed in U.S.A.

The original purchaser is granted permission to duplicate these pages. This is a non-transferable license.

9

I ze - kiel saw the wheel, way up in the

II Way in the mid - dle, way up,

12

I mid - dle of the air. E - ze - kiel saw the wheel,

II up in the air. Way in the mid - dle,

15

I way in the mid - dle of the air.

II way in the mid - dle of the air. Oh, the big wheel run by

18

I and the lit - tle wheel run by the

II faith and the lit - tle wheel run by the

20

I grace of God. Wheel in a wheel, oh, *mp*

II grace of God. Wheel in a wheel, oh, *mp*

23 *cresc.*

I way in the mid - dle, way in the mid - dle,

II way in the mid - dle, way in the mid - dle,

cresc.

25 *mf*

I way in the mid - dle of the air.

II way in the mid - dle of the air.

mf

27 *f*

I Let me tell — you what a hyp - o - crite 'll do,

II

f

29 *f*

I way in the mid - dle of the air; He'll

II way in the mid - dle of the air;

f

31

I talk a - bout me, then he'll talk a - bout you,

II He will talk and then he'll talk, talk, talk,

Ubi Caritas

Pronunciation Guide and Translation

Ubi caritas et amor,

OO-bee KAH-ree-tahs eht ah-mohr,

Where there is charity and love,

Deus ibi est.

DEH-oos EE-bee ehst.

God is there.

Congregavit nos in unum Christi amor.

Kohn-greh-GAH-veet nohs een OO-noom KREE-stee ah-mohr.

The love of Christ has gathered us together.

Exsultemus et in ipso jucundemur.

Egg-zool-TEH-moos eht een EEP-soh yoo-koon-DEH-moor.

Let us rejoice and be glad in it.

Et ex corde diligamus nos sincero.

Eht ehks KOHR-deh dee-lee-GAH-moos nohs seen-CHEH-roh.

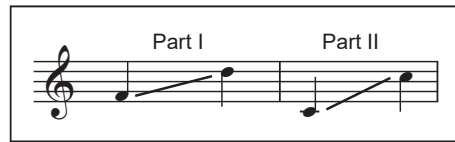
And from a sincere heart let us love one another.

Ubi Caritas

Traditional Latin

Two-part and Piano*

Music by
Victor C. Johnson



20 Tenderly ♩ = ca. 76

Piano accompaniment for the first system, marked *mp*. It consists of a treble and bass clef staff with a 4/4 time signature. The music is in a key signature of one flat.

3 All Voices

Vocal and piano accompaniment for the second system. The vocal line is in a treble clef with lyrics: "U - bi ca - ri - tas, u - bi". The piano accompaniment is in a treble and bass clef. Performance markings include *poco rit.*, *mp*, and *a tempo*.

Vocal and piano accompaniment for the third system. The vocal line is in a treble clef with lyrics: "ca - ri - tas, u - bi ca - ri - tas et a - mor; U - bi". The piano accompaniment is in a treble and bass clef.

Performance time: ca. 2:45

Copyright © 2015 Choristers Guild. All rights reserved. Printed in U.S.A.
Reproduction of all or any portion in any form is prohibited without permission of the publisher.

The original purchaser is granted permission to duplicate these pages. This is a non-transferable license.

9

ca - ri - tas, u - bi ca - ri - tas, De - us i - bi

12

est.

(21)

15

poco rit. *a tempo* *mf*

I U - bi ca - ri - tas, u - bi ca - ri - tas,

poco rit. *mf* *a tempo*

II U - bi ca - ri - tas, u - bi ca - ri - tas, u - bi

poco rit. *mf* *a tempo*

Tafta Hindi

Two-part and Piano*

Trad., alt.

Middle Eastern Folk Song
Arranged by Greg Gilpin

Part I Part II

26 Flirting, with energy (♩ = 88-92)

mf

mf

mf

I
Taf - ta hin - di, taf - ta hin - di, shash ha - ri - ri ya ba - nat.

II
Taf - ta hin - di, taf - ta hin - di, shash ha - ri - ri ya ba - nat.

Performance time: ca. 1:50

Copyright © 2016 Choristers Guild. All rights reserved. Printed in U.S.A.
Reproduction of all or any portion in any form is prohibited without permission of the publisher.

The original purchaser is granted permission to duplicate these pages. This is a non-transferable license.

9

I Taf - ta hin - di, taf - ta hin - di, shash ha - ri - ri ya ba - nat.

II Taf - ta hin - di, taf - ta hin - di, shash ha - ri - ri ya ba - nat.

13 *mp*

I If - ta - hi - li en - di bi - da lil sit - tat.

II ya sa - bi - ya, en - di bi - da lil sit - tat.

mp

17

I If - ta - hi - li en - di bi - da lil sit - tat.

II ya sa - bi - ya, en - di bi - da lil sit - tat.

If I Knew You

Two-part and Piano*

Words by Nixon Waterman (1859–1944), alt.
To Know All Is to Forgive All, from
“In Merry Mood” (1903)

Music by
Mary Lynn Lightfoot



31 With expression and sincerity (♩ = 76-80)

The main musical score consists of three systems. The first system is a piano introduction in 4/4 time, marked *mp*. The second system begins at measure 5, with vocal parts I and II and piano accompaniment. It includes lyrics: "If I knew you, and you knew me, if both of". The tempo markings are *rit.*, *mp*, and *a tempo*. The third system begins at measure 8, with lyrics: "us could clear - ly see; And with an in - ner". It includes tempo markings *cresc.* and *cresc.*. The piano accompaniment includes a *cresc.* marking.

Performance time: ca. 3:20

Copyright © 2017 Choristers Guild. All rights reserved. Printed in U.S.A.
Reproduction of all or any portion in any form is prohibited without permission of the publisher.

The original purchaser is granted permission to duplicate these pages. This is a non-transferable license.

11

I sight di - vine the mean - ing of your heart and mine.

II sight di - vine the mean - ing of your heart and mine.

14 *poco rit.* *a tempo* *mp*

I and we would

II *poco rit.* *mp* *a tempo*

I'm sure that we would dif - fer less

poco rit. *mp a tempo*

17 *cresc.*

I clasp our hands in friend - li - ness; Our thoughts would pleas - ant -

II *cresc.*

Our thoughts would pleas - ant -

cresc.

20

I ly a - gree *mf* and you knew me,

II ly a - gree *mf* if I knew you,

mf

23 (33)

I if I knew you and you knew me. *poco rit.* *accel.*

II if I knew you and you knew me. *poco rit.* *accel.*

poco rit. *mp* *accel. e cresc.*

26 *mf*

I We could look each oth - er in the face

II

mf

More movement (♩ = 92)

Sisi Kushangilia

(We Will Be Glad)

Two-part *a cappella* and Percussion*

Words and Music by
Victor C. Johnson

(38) With energy! (♩ = 100)

Shaker *mp*

Hand Drum *mp*

Djembe *mp*

5 *mp-mf*

I Si - si — n' - go - ma, si - si ku - im - ba,

II Si - si — n' - go - ma, si - si ku - im - ba,

mp-mf

mp-mf

mp-mf

Swahili Text Pronunciation and Translation

Sisi n'goma.
see-see n'goh-mah
We will dance.

Sisi kuimba.
see-see koo-eem-bah
We will sing.

Sisi kushangilia.
see-see koo-shahn-gee-lee-ah
We will be glad.

Performance time: ca. 3:00

Copyright © 2016 Choristers Guild. All rights reserved. Printed in U.S.A.
Reproduction of all or any portion in any form is prohibited without permission of the publisher.

The original purchaser is granted permission to duplicate these pages. This is a non-transferable license.

9

I
 si - si — ku - shan - gi - li - a. _____

II
 si - si — ku - shan - gi - li - a. _____

Percussion pattern repeats through m. 115

13

I
 Si - si — n' - go - ma, si - si ku - im - ba,

II
 Si - si — n' - go - ma, si - si ku - im - ba,

17

I
 si - si — ku - shan - gi - li - a. _____

II
 si - si — ku - shan - gi - li - a. _____

1x: 2x:
 (39) (40)

1.

21

I
 — N' - go - ma, — si - si n' - go - ma. —

II
 — N' - go - ma, — si - si n' - go - ma. —

2.