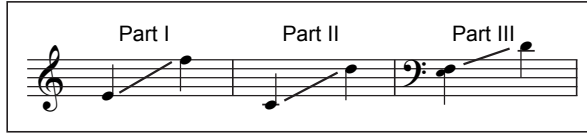


# Please Don't Sing Another "Fa La La"!

Three-part Mixed and Piano\*

Words and Music by  
Greg Gilpin



① **Bright with humor** (♩ = 120-126)

Piano accompaniment for the first system. The right hand plays chords and moving lines, while the left hand plays a simple bass line. The dynamic marking is *mf*.

Vocal and piano accompaniment for the second system. The vocal parts (I, II, III) are shown with lyrics: "You can sing of snow — or San - ta's". The piano accompaniment continues with a dynamic marking of *mp*.

Performance time: ca. 2:40

\*Also available: SATB (CGE33); Two-part (CGE35);  
Performance/Accompaniment CD (CGECD14).

Copyright © 2015 Choristers Guild. All rights reserved. Printed in U.S.A.  
Reproduction of all or any portion in any form is prohibited without permission of the publisher.

The copying of this music is prohibited by law and is not covered by CCLI, LicenSing, or OneLicense.net.

6 *mf*

I II

“Ho, ho, ho.” — But, please don’t sing an - oth - er “Fa la

III

*mf*

8

I II

la.”

III *mp*

You can sing of frost — or how much

*mp*

10

I II

III *mf*

pre - sents cost. — But, please don’t sing an - oth - er “Fa la

*mf*

12 *mf*

I know we've decked the hall with boughs of  
la."

14

hol - ly. — But please, can't we all just stop right

16

there? And yes, it is the sea - son to be