

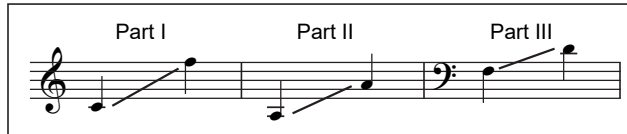
# The Wide Missouri

(*Shenandoah with The Water Is Wide*)

Three-part Mixed and Piano\*

Trad., alt.

Traditional Folk Songs  
Arranged by Ruth Elaine Schram



① **Fluidly** (♩ = 84-88)

The score consists of a piano accompaniment and three vocal parts (I, II, III). The piano part is in 4/4 time, marked *mp*, and features a triplet of eighth notes in the right hand and a steady eighth-note bass line. The vocal parts are in 4/4 time, also marked *mp*. Part I starts with a whole rest for the first two measures, then enters with the melody. Part II and Part III enter in the third measure. The lyrics are: Shen-an-do', O Shen-an-do', O Shen-an-do'.

Performance time: ca. 3:35

\*Also available: SATB (CGE250); SSAA (CGE251); Performance/Accompaniment CD (CGECD101).

Copyright © 2018 Choristers Guild. All rights reserved. Printed in U.S.A.  
Reproduction of all or any portion in any form is prohibited without permission of the publisher.

The copying of this music is prohibited by law and is not covered by CCLI, LicenSing, or OneLicense.net.

7 *mf*

I Shen-an - do'; \_\_\_\_\_ The wa-ter is wide;

II \_\_\_\_\_ O Shen - an-do', \_\_\_\_\_

III \_\_\_\_\_ O Shen - an-do', \_\_\_\_\_

*mf*

10

I I can-not cross o'er. Nei-ther have I

II *mf* I can-not cross o'er. Nei-ther have I

III *mf* I can-not cross o'er. Nei-ther have I

14

I the wings to— fly. Build me a boat\_\_\_\_\_

II the wings to fly. Build me a boat, a

III the wings to— fly. Build me a boat, a

18 *poco rall.*

I — that will car - ry two; we both shall row.\_\_\_\_\_

II boat that will car - ry two, car - ry two;\_\_\_\_\_ we both shall *poco rall.*

III boat that will car - ry two, car - ry two;\_\_\_\_\_ we both shall *poco rall.*

22 *a tempo* ***mf***

I Shen-an-do',

II row, my love and I. *a tempo* ***mp*** O Shen-an-do',

III row. *a tempo* ***mp*** O Shen-an-do',

25 (2)

I Shen-an-do', O Shen-an-do',

II O Shen-an-do', Shen-an-do',

III O Shen-an-do', Shen-an-do',

28

I  
— I long to hear you, — a - way, —

II  
*mf*  
— I long to hear you. — We're bound a -

III  
*mf*  
— I long to hear you. — We're bound a -

32

I  
— you roll - ing riv - er. — O

II  
way, you roll - ing riv - er. O

III  
way, riv - er. — O