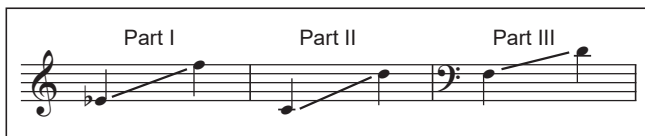


for Holly
Zephyr*

Three-part Mixed and Piano**

Words and Music by
Amy F. Bernon



① **Thoughtfully** (♩ = 104)

Piano accompaniment for the first system. The music is in 3/4 time and B-flat major. The right hand plays a melodic line with eighth notes and quarter notes, while the left hand plays a bass line with quarter notes and eighth notes. The dynamic is *p* (piano). The instruction "light pedaling throughout" is written below the left hand.

Vocal and piano accompaniment for the second system. It features three vocal parts (I, II, and III) and piano accompaniment. The vocal parts are in 3/4 time and B-flat major. The lyrics are: "Zeph - yr, — zeph - yr, — beau - ti - ful breeze, —". The piano accompaniment is in 3/4 time and B-flat major. The dynamic is *p* (piano). The instruction "light pedaling throughout" is written below the piano accompaniment.

Performance time: ca. 2:30

*Pronounced *ZEF-uhr*

**Also available: SSA (CGE170); Two-part (CGE172);

Performance/Accompaniment CD (CGECD75).

Copyright © 2017 Choristers Guild. All rights reserved. Printed in U.S.A.
Reproduction of all or any portion in any form is prohibited without permission of the publisher.

The copying of this music is prohibited by law and is not covered by CCLI, LicenSing, or OneLicense.net.

9

I zeph - yr, — zeph - yr, — wind - ing through trees, —

II zeph - yr, — zeph - yr, — wind - ing through trees, —

III zeph - yr, — zeph - yr, — wind - ing through trees, —

13

I teas - ing the leaves. —

II teas - ing the leaves. —

III teas - ing the leaves. —

2

17 *mp*

I Zeph - yr, — zeph - yr, — light-ly you go, —

II *mp*
Zeph - yr, — zeph - yr, — light-ly you go, —

III *mp*
Zeph - yr, — zeph - yr, —

21

I zeph - yr, — zeph - yr, — on-ly you know — your

II zeph - yr, — zeph - yr, — on-ly you know —

III zeph - yr, — zeph - yr, —

3

25

I wan-der-ing way, _____ your wan-der-ing way. _____

II _____ your wan-der-ing way. _____

III _____ your wan-der-ing way, your wan-der-ing way. _____

29

I *f* I try to fol-low but you've gone too high. _____

II *f* I try to fol-low but you've gone too high. _____

III *f* I try to fol-low but you've gone too high. _____