

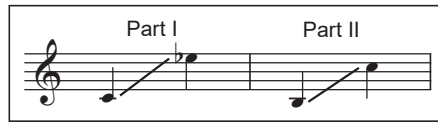
Workin' on the Railway

(A Partner Song with *Drill, Ye Tarriers, Drill*)

Two-part and Piano* with Opt. Small Percussion**

Trad., alt.
Additional words by
Mary Donnelly and George L. O. Strid

American Folk Song
*Arranged with additional music by
Mary Donnelly and George L. O. Strid*



① With energy (♩ = 72-76)

mf

Cowbell

Wood Blocks

mf

5 Part II *mf*

II I've been work - in' on the rail - way, from

CB

WB

Performance time: ca. 2:00

*Also available: Performance/Accompaniment CD (CGECD65).

**Cowbell and Wood Blocks parts are on page 12.

Copyright © 2017 Choristers Guild. All rights reserved. Printed in U.S.A.
Reproduction of all or any portion in any form is prohibited without permission of the publisher.

The copying of this music is prohibited by law and is not covered by CCLI, LicenSing, or OneLicense.net.

8

II

dawn 'til set - ting sun. And I dig, dig, dig with

11

II

all my might 'til the work is fi - nal - ly done. Sing - in,

14

II

Dig in! Just — a lit - tle deep - er. Dig a lit - tle deep - er, got - ta

17

II

move that hill. — Dig in! Just — a lit - tle deep - er.

20 *cresc.* *f*

II Dig a lit - tle deep - er, got - ta dig a lit - tle deep - er. Come on,

cresc.

22

II drill, ye tar - ri - ers, drill, and blast and

f

25 3

II fire.

f

CB

WB

Part I
mf

28

I

Ev - 'ry morn-in' at

decresc.

mf

CB

WB

decresc.

decresc.

31

I

sev - en o' - clock, there's a hun - dred tar - ri - ers a -

33

I

work - in' at the rock. And the boss comes a - long and he