

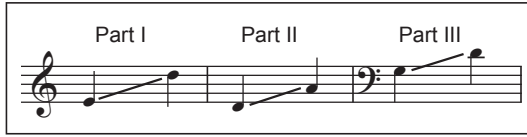
Tafta Hindi

3

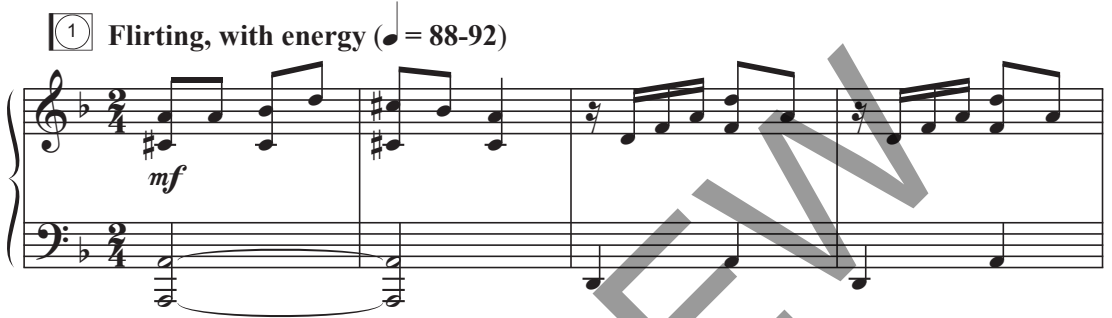
Three-part Mixed and Piano*

Trad., alt.

Middle Eastern Folk Song
Arranged by Greg Gilpin



① Flirting, with energy (♩ = 88-92)



5 *mf*

I Taf - ta hin - di, taf - ta hin - di, shash ha - ri - ri ya ba - nat.

II *mf*

III *mf*

Taf - ta hin - di, taf - ta hin - di, shash ha - ri - ri ya ba - nat.

Taf - ta hin - di, taf - ta hin - di, shash ha - ri - ri ya ba - nat.

Piano accompaniment notation for the vocal parts, continuing from the previous section. It includes treble and bass clef staves with a wavy bass line and a more active treble line.

Performance time: ca. 1:50

*Also available: Two-part (CGE129); Performance/Accompaniment CD (CGECD55).

Copyright © 2016 Choristers Guild. All rights reserved. Printed in U.S.A.
Reproduction of all or any portion in any form is prohibited without permission of the publisher.

The copying of this music is prohibited by law and is not covered by CCLI, LicenSing, or OneLicense.net.

CGE128

9

I Taf - ta hin - di, taf - ta hin - di, shash ha - ri - ri ya ba - nat.

II Taf - ta hin - di, taf - ta hin - di, shash ha - ri - ri ya ba - nat.

III Taf - ta hin - di, taf - ta hin - di, shash ha - ri - ri ya ba - nat.

13 *mp*

I If - ta - hi - li en - di bi - da — lil sit - tat.

II *mp*
ya sa - bi - ya, en - di bi - da — lil sit - tat.

III *mp*
If - ta - hi - li en - di bi - da lil sit - tat.

mp

17

I If - ta - hi - li en - di bi - da — lil sit - tat.

II ya sa - bi - ya, en - di bi - da — lil sit - tat.

III If - ta - hi - li en - di bi - da lil sit - tat.

21 (2)

I *mf* Taf - ta hin - di, taf - ta hin - di,

II *mf* Taf - ta hin - di, taf - ta hin - di,

III *mf* Taf - ta hin - di, taf - ta hin - di,

cresc. *mf*

25

I
shash ha - ri - ri ya ba - nat. Taf - ta hin - di, taf - ta hin - di,

II
shash ha - ri - ri ya ba - nat. Taf - ta hin - di, taf - ta hin - di,

III
shash ha - ri - ri ya ba - nat. Taf - ta hin - di, taf - ta hin - di,

29

I
shash ha - ri - ri ya ba - nat. If - ta - hi - li *mp*

II
shash ha - ri - ri ya ba - nat. ya sa - bi - ya, *mp*

III
shash ha - ri - ri ya ba - nat. If - ta - hi - li *mp*

33

I en - di bi-da lil sit - tat. If - ta - hi - li

II en - di bi-da lil sit - tat. ya sa - bi - ya,

III en - di bi-da lil sit - tat. If - ta - hi - li

37

I en - di bi-da lil sit - tat. 3

II en - di bi-da lil sit - tat.

III en - di bi-da lil sit - tat.

cresc.

Descant

41 *mf*

Taf - ta, taf - ta hin - di.

45

Taf - ta, taf - ta hin - di.

49

Taf - ta, taf - ta hin - di.

I

II *mf*

Taf - ta hin - di, taf - ta hin - di, shash ha - ri - ri ya ba - nat.

III *mf*

Taf - ta hin - di, taf - ta hin - di, shash ha - ri - ri ya ba - nat.