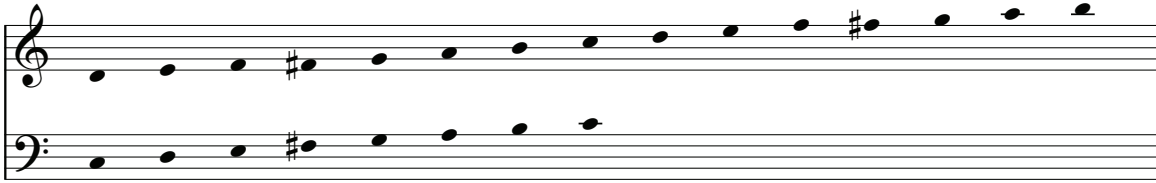


To Gale Manor, the Youth Choir, and the Handchimes
of Alexandria Presbyterian Church, Alexandria, Virginia
for Easter Sunday, 2014

Just As He Said!

3 octaves
Optional handbells used: 23*



*The treble clef of the handbell part may be played alone if a simpler alternative is preferred.

Trevor Manor

Brightly (♩ = 96)

1 2 3 4 5 6

mf *cresc.* *f*

7 8 9 10 11 12

mf

13 14 15 16 17 18

dim. *mp*

The piano accompaniment is written on a grand staff with treble and bass clefs. It consists of 18 numbered measures. The key signature has one sharp (F#) and the time signature is 6/8. The piece is marked 'Brightly' with a tempo of quarter note = 96. Dynamics include *mf*, *cresc.*, *f*, *dim.*, and *mp*. The notation includes various chords, arpeggios, and melodic lines in both hands.

A choral score is available, code CGA1393.

Copyright © 2015 Choristers Guild. All rights reserved. Printed in U.S.A.
Reproduction of all or any portion in any form is prohibited without permission of the publisher.

19 **13** 32 33 34 35 36

mp cresc. *mf*

This system contains measures 19 through 36. Measure 19 features a thick black bar across both staves. Measures 32-34 have a thick black bar in the bass staff. Dynamic markings include *mp cresc.* starting at measure 32 and *mf* at measure 35.

37 38 39 40 41 42

dim.

This system contains measures 37 through 42. A *dim.* marking is present in measure 41.

43 44 45 46 47 48

mp *cresc.*

This system contains measures 43 through 48. Dynamic markings include *mp* at measure 43 and *cresc.* at measure 47.

49 50 51 52 53 54

Sk *mf*

This system contains measures 49 through 54. Measure 50 includes a wavy line and the text 'Sk'. A *mf* marking is present in measure 52.