

Jesus Christ Is Born

Jeff Reeves

Jeff Reeves

Introduction*

Happily (♩. = 84)

Finger Cymbals

Soprano Glockenspiel/
Alto Glockenspiel

Alto Metallophone/
Alto Xylophone

Bass Metallophone/
Bass Xylophone

Performance Suggestions

This anthem for younger children can be performed in a variety of ways. Consider these ideas:

- Accompany the song with Orff instruments, pp. 2-5.
 - Choose children who maintain a strong steady beat to play the instruments.
 - If there are not enough younger children to sing and play, recruit older children to play the Orff parts.
- Accompany the song with piano, pp. 6-7.
 - Children should follow vocal line, pp. 3-5 as they learn their part.

Note: Piano and Orff instruments are not intended to be played together.
- Dramatize the song.
 - Choose children to dramatize the Christmas story depicted in stanzas 2-5.
 - Dress the characters in Biblical clothes.
 - Consider placing a manger scene in front of the choir. As each stanza begins, a new character enters and stands near the manger.

* Introduction: Begin with BM/BX. Add each instrument every 4 measures until all instruments are playing. Add instruments in this order: AM/AX, SG/AG, FC.

Copyright © 2000 Choristers Guild. All rights reserved. Printed in U.S.A.
Reproduction of all or any portion in any form is prohibited without permission of the publisher.

The CCLI license does not grant permission to photocopy this music.

5 *mf*

1. Sing, oh, sing this hap - py song: Je - sus Christ is born!
2. Hear the an - gels sing their song: Je - sus Christ is born!
3. Shep - herds come to wor - ship Him, Je - sus Christ is born!
4. By a star the Wise Men come, Je - sus Christ is born!
5. Ma - ry rocks her ba - by boy, Je - sus Christ is born!
6. Sing, oh, sing this hap - py song: Je - sus Christ is born!

FC

SG-AG

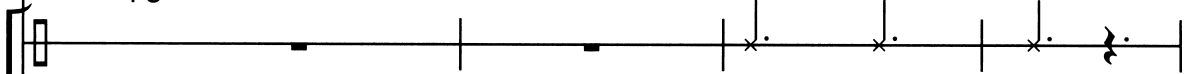
AM-AX

BM-BX

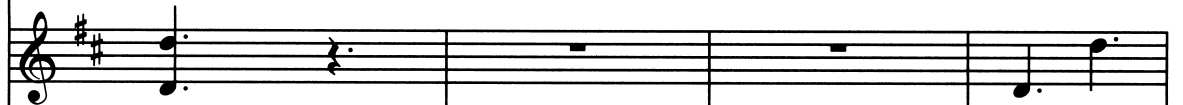


Ring the bells, re - joi - ce to - day, Je - sus Christ is born!__
 Glo - ry in the high - est, Je - sus Christ is born!__
 See them kneel and praise the King, Je - sus Christ is born!__
 They bring gifts to wor - ship Him, Je - sus Christ is born!__
 Jo - seph helps to com - fort them, Je - sus Christ is born!__
 Ring the bells, re - joi - ce to day, Je - sus Christ is born!__

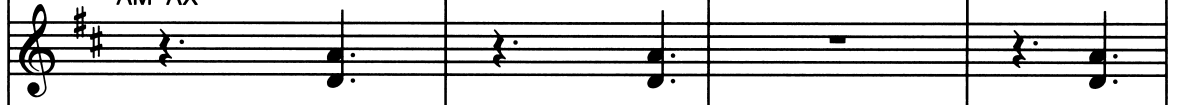
FC



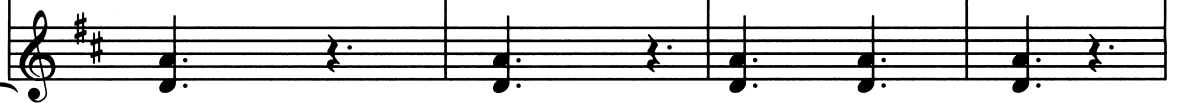
SG-AG



AM-AX



BM-BX



13

Je - sus Christ is born!
Je - sus Christ is born!
Je - sus Christ is born!
Je - sus Christ is born!
Je - sus Christ is born!
Je - sus Christ is born!

FC

Ending*

SG-AG

AM-AX

BM-BX

* Ending: Repeat the 4 measure introduction. Instruments drop out in reverse order ending with BM/BX.