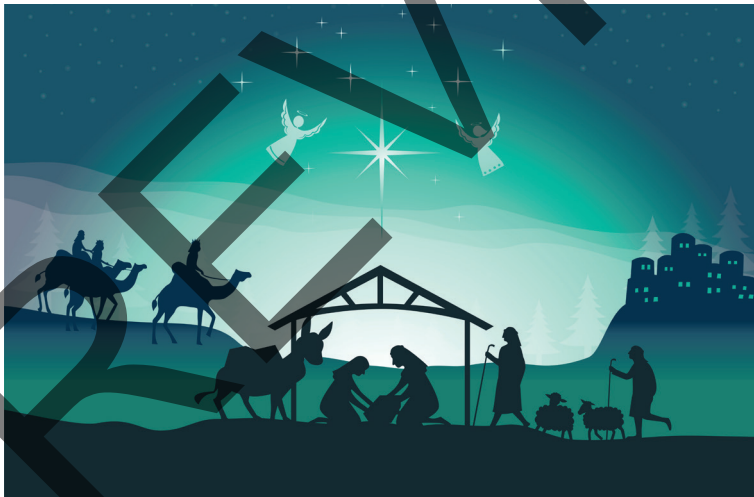




choristersguild

Sussex Carol



www.choristersguild.org

Choristers Guild is a 501c3 nonprofit organization whose mission is to enable leaders to nurture the musical and spiritual growth of children, youth, and adults.

Sussex Carol

Traditional English carol
arr. R. Christopher Teichler
(ASCAP)

Traditional English carol

Allegretto, con spirito (♩. = 66-69)

Piano

f *p*

Pedal harmonically

5 *mp*

9 *mf unis.*

SA
TB

On Christ - mas night all Chris-tians sing to

Copyright © 2024 Choristers Guild. All rights reserved. Printed in U.S.A.
Reproduction of all or any portion in any form is prohibited without permission of the publisher.

The copying of this music is prohibited by law and is not covered by CCLI or OneLicense.net.

13

hear the news_ the an - gels bring. On Christ - mas night all Chris - tians sing to

mf unis.

This system contains the first two staves of music. The top staff is a vocal line in G major with a key signature of one flat (F major) and a common time signature. It begins at measure 13 with the lyrics 'hear the news_ the an - gels bring. On Christ - mas night all Chris - tians sing to'. The bottom staff is a piano accompaniment in the same key and time, starting with a whole note chord in the right hand and a whole note chord in the left hand. The dynamic marking *mf unis.* is placed below the piano staff.

This block shows the piano accompaniment for the first system, consisting of two staves. The right hand plays a melodic line with eighth and sixteenth notes, while the left hand provides a harmonic accompaniment with chords and single notes. The music is in G major and common time.

17

hear the news_ the an - gels bring. News of great joy,_ news of _ great

mp div.

mp div.

This system contains the third and fourth staves of music. The top staff is a vocal line starting at measure 17 with the lyrics 'hear the news_ the an - gels bring. News of great joy,_ news of _ great'. The bottom staff is a piano accompaniment. The dynamic marking *mp div.* appears above the vocal line and below the piano staff. The piano accompaniment features a more active right hand with eighth notes and chords, and a left hand with chords and single notes.

This block shows the piano accompaniment for the second system, consisting of two staves. The right hand continues the melodic line with eighth notes and chords, while the left hand provides harmonic support with chords and single notes. The dynamic marking *p* is placed below the piano staff.

21

f *unis.*

mirth, news of our mer - ci - ful King's birth.

f *unis.* *div.*

25

mp

Oo

mf unis.

Then why should we on

mf

29

earth_ be sad, since our Re - deem - er made us glad, Then

32 *div.*

Oo_ why should we on earth_ be sad, since our Re - deem - er