

I Will Trust You, Lord

Aren Newell Williams
and Becki Slagle Mayo
Based on Psalm 56:3-4, Proverbs 3:5

Becki Slagle Mayo

With confident assurance (♩ = 120)

Piano

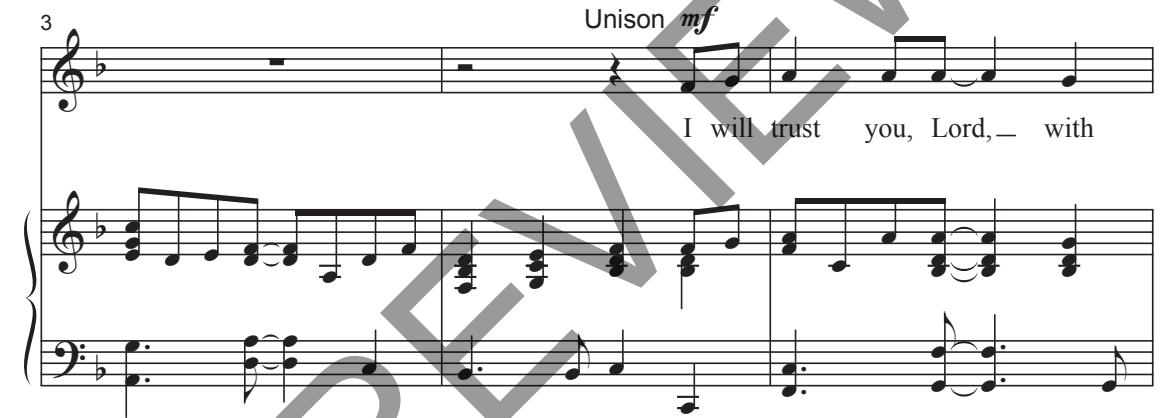


mf

The piano introduction consists of two staves in 4/4 time. The right hand features a melody of eighth and quarter notes, while the left hand provides a harmonic accompaniment with chords and single notes.

3 Unison *mf*

I will trust you, Lord, — with



This system shows the vocal line and piano accompaniment for the first line of lyrics. The vocal line is a unison melody starting on a whole rest, followed by the lyrics. The piano accompaniment continues from the previous system.

6

all my heart, to lead and to guide my way. —



This system shows the vocal line and piano accompaniment for the second line of lyrics. The vocal line continues the melody with the lyrics. The piano accompaniment provides harmonic support.

Copyright © 2021 Choristers Guild. All rights reserved. Printed in U.S.A.
Reproduction of all or any portion in any form is prohibited without permission of the publisher.

The copying of this music is prohibited by law and is not covered by CCLI or OneLicense.net.

9

I will trust you, Lord,— with all my heart,

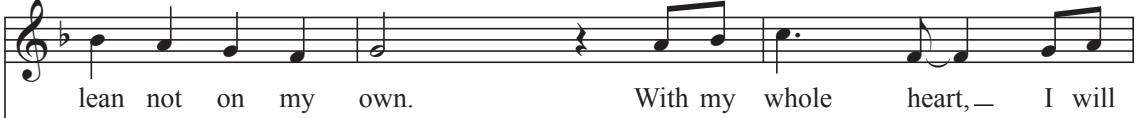
12

I'll fol - low you all my days.

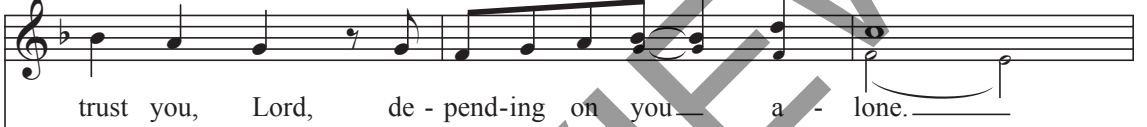
15

With my whole heart,— I will trust you, Lord, and

18



21



24



27

to lead_ and to guide my way. _____ I will

30

trust you, Lord, _ with all my heart, I'll fol - low you

33

all my days. With my