

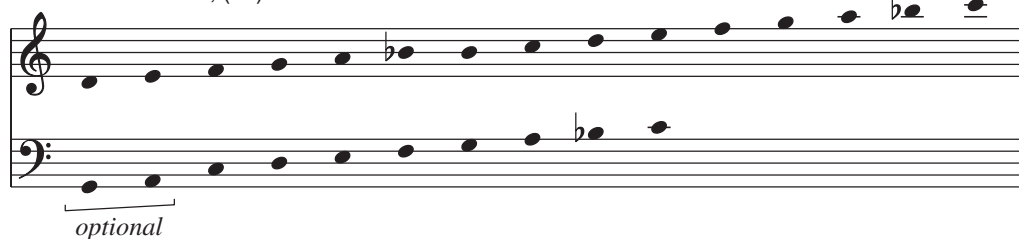


choristers guild

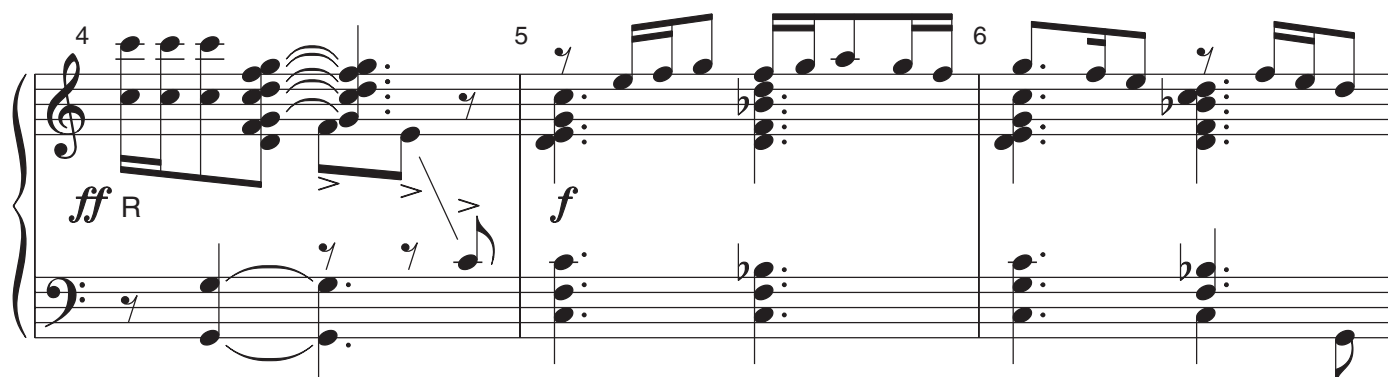
*For Mary Kay Parrish
and the Oklahoma Baptist University Ringers, Shawnee, Oklahoma*

Song of Celebration

3 or 4 octaves
Handbells used: 23, (25)



Susan Grant and Jeff Reeves



Copyright © 2003 Choristers Guild. All rights reserved. Printed in U.S.A.
Reproduction of all or any portion in any form is prohibited without permission from the publisher.

The CCLI license does not grant permission to photocopy this music.

Musical notation for measures 7, 8, and 9. Measure 7 features a treble clef with a half note G4 and a bass clef with a half note F3. Measure 8 features a treble clef with a half note G4 and a bass clef with a half note F3. Measure 9 features a treble clef with a half note G4 and a bass clef with a half note F3.

Musical notation for measures 10, 11, and 12. Measure 10 features a treble clef with a half note G4 and a bass clef with a half note F3. Measure 11 features a treble clef with a half note G4 and a bass clef with a half note F3. Measure 12 features a treble clef with a half note G4 and a bass clef with a half note F3.

Musical notation for measures 13, 14, and 15. Measure 13 features a treble clef with a half note G4 and a bass clef with a half note F3. Measure 14 features a treble clef with a half note G4 and a bass clef with a half note F3. Measure 15 features a treble clef with a half note G4 and a bass clef with a half note F3.

Musical notation for measures 16, 17, and 18. Measure 16 features a treble clef with a half note G4 and a bass clef with a half note F3. Measure 17 features a treble clef with a half note G4 and a bass clef with a half note F3. Measure 18 features a treble clef with a half note G4 and a bass clef with a half note F3.