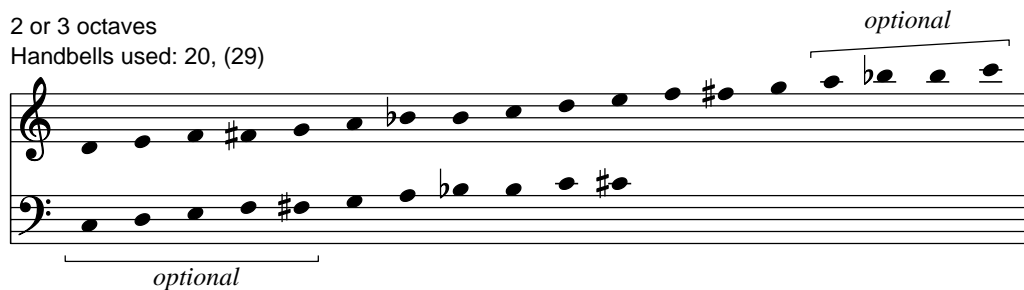


# Shining Bright

2 or 3 octaves

Handbells used: 20, (29)



2 octave choirs omit notes in ( ).  
Staccato notes should be thumb-damped throughout.

Traditional  
arr. Linda R. Lamb

1 **Brightly** (♩ = 132-152) 2 3 4

*mf* TD R

5 6 7

TD R TD

8 9 10 11

R TD R TD R TD

Copyright © 2002 Choristers Guild. All rights reserved. Printed in U.S.A.  
Reproduction of all or any portion in any form is prohibited without permission of the publisher.

12 13 14

Measures 12-14 of a musical score. Measure 12: Treble clef has a whole note chord (F#4, A4, C5) labeled 'R'; Bass clef has a whole note chord (F#2, A2, C3). Measure 13: Treble clef has a whole note chord (F#4, A4, C5) labeled 'TD'; Bass clef has a whole note chord (F#2, A2, C3). Measure 14: Treble clef has a whole note chord (F#4, A4, C5) labeled 'R' and 'TD'; Bass clef has a whole note chord (F#2, A2, C3).

15 16 17

Measures 15-17 of a musical score. Measure 15: Treble clef has a whole note chord (F#4, A4, C5) labeled 'R' and 'TD'; Bass clef has a whole note chord (F#2, A2, C3). Measure 16: Treble clef has a whole note chord (F#4, A4, C5) labeled 'TD'; Bass clef has a whole note chord (F#2, A2, C3). Measure 17: Treble clef has a whole note chord (F#4, A4, C5) labeled 'TD'; Bass clef has a whole note chord (F#2, A2, C3).

18 19 20 21 SK

Measures 18-21 of a musical score. Measure 18: Treble clef has a whole note chord (F#4, A4, C5) labeled 'TD'; Bass clef has a whole note chord (F#2, A2, C3). Measure 19: Treble clef has a whole note chord (F#4, A4, C5) labeled 'R'; Bass clef has a whole note chord (F#2, A2, C3). Measure 20: Treble clef has a whole note chord (F#4, A4, C5) labeled 'TD' and 'f'; Bass clef has a whole note chord (F#2, A2, C3). Measure 21: Treble clef has a whole note chord (F#4, A4, C5) labeled 'SK' and 'f'; Bass clef has a whole note chord (F#2, A2, C3).

22 23 SK 24

Measures 22-24 of a musical score. Measure 22: Treble clef has a whole note chord (F#4, A4, C5) labeled 'R' and 'TD'; Bass clef has a whole note chord (F#2, A2, C3). Measure 23: Treble clef has a whole note chord (F#4, A4, C5) labeled 'SK' and 'f'; Bass clef has a whole note chord (F#2, A2, C3). Measure 24: Treble clef has a whole note chord (F#4, A4, C5) labeled 'SK' and 'f'; Bass clef has a whole note chord (F#2, A2, C3).

Measures 25-28 of the musical score. The key signature is one sharp (F#). The score is written for piano (R) and tenor drum (TD). Measures 25 and 26 feature a wavy line above the piano part, labeled SK. Measures 27 and 28 also feature a wavy line above the piano part, labeled SK. The piano part consists of chords, and the tenor drum part consists of single notes.

Measures 29-31 of the musical score. The key signature is one sharp (F#). The score is written for piano (R) and tenor drum (TD). Measures 29 and 30 feature a wavy line above the piano part, labeled SK. Measure 31 also features a wavy line above the piano part, labeled SK. The piano part consists of chords, and the tenor drum part consists of single notes.

Measures 32-35 of the musical score. The key signature is one sharp (F#). The score is written for piano (R) and tenor drum (TD). Measures 32 and 33 feature a wavy line above the piano part, labeled SK. Measure 34 features a wavy line above the piano part, labeled SK. Measure 35 features a wavy line above the piano part, labeled SK. The piano part consists of chords, and the tenor drum part consists of single notes.

*"This Little Light of Mine"*

Measures 36-39 of the musical score. The key signature is one sharp (F#). The score is written for piano (R) and tenor drum (TD). Measure 36 features a wavy line above the piano part, labeled SK. Measure 37 features a wavy line above the piano part, labeled SK. Measure 38 features a wavy line above the piano part, labeled SK. Measure 39 features a wavy line above the piano part, labeled SK. The piano part consists of chords, and the tenor drum part consists of single notes. The dynamic marking *mf* is present in measure 36.