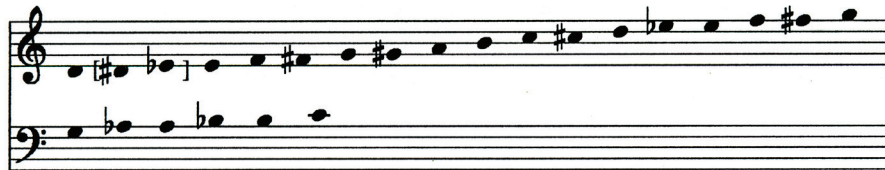




# choristers guild

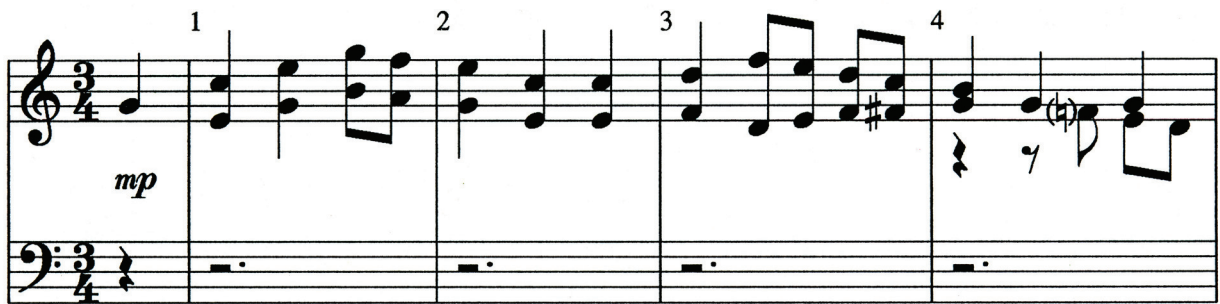
## The Ash Grove

Handbells used: 2 octaves (23 bells)



THE ASH GROVE  
Welsh folk tune  
arr. Barbara Baltzer Kinyon

$\text{♩} = c. 84$



Copyright © 1992 Choristers Guild. All rights reserved. Printed in U.S.A.  
Reproduction in any portion or form prohibited without publisher's permission

Published by Choristers Guild  
[www.choristersguild.org](http://www.choristersguild.org)

15 16 17 18 19

*p*

Detailed description: This system contains measures 15 through 19. The treble clef staff features chords and melodic lines, while the bass clef staff provides a harmonic accompaniment. A dynamic marking of *p* (piano) is placed in the first measure of this system.

20 21 22 23 24

*cresc.* *mf*

Detailed description: This system contains measures 20 through 24. The treble clef staff continues with complex chordal textures and melodic fragments. The bass clef staff has a more active line. Dynamic markings include *cresc.* (crescendo) in measure 21 and *mf* (mezzo-forte) in measure 23.

25 26 27 28

Detailed description: This system contains measures 25 through 28. The treble clef staff shows a mix of chords and moving lines. The bass clef staff features a steady accompaniment with some chromatic movement.

29 30 31 32 33

LV R *p*

Detailed description: This system contains measures 29 through 33. In measure 30, there are annotations 'LV' and 'R' with arrows pointing to specific notes in the bass clef staff. A dynamic marking of *p* (piano) is present in measure 32. The system concludes with a fermata over the final notes in both staves.