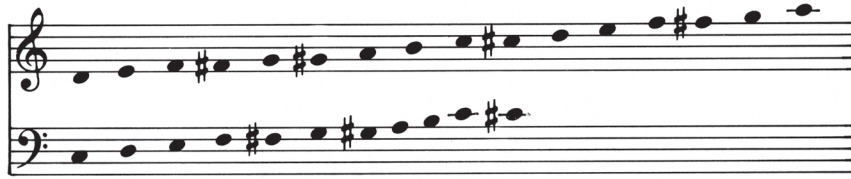


# Gavotte

Bells used: 3 octaves (27 bells)



From Cantata 202  
 Johann Sebastian Bach, 1685-1750  
 arr. Robert J. Powell

$\text{♩} = \text{c. } 56$

Oboe  
 (or other  
 C inst.)

*mf*

1 2 3

Bells

*mf*

1 2 3

Musical notation for Oboe and Bells, measures 1-3. The Oboe part is in treble clef with a key signature of one sharp (F#) and a 2/2 time signature. The Bells part is in grand staff (treble and bass clefs) with the same key signature and time signature. Both parts are marked 'mf'. Measure numbers 1, 2, and 3 are indicated above the staves.

4 *tr* 5 6 7 *tr*

4 5 6 7 *Sk*

Musical notation for Oboe and Bells, measures 4-7. The Oboe part continues in treble clef with a key signature of one sharp (F#) and a 2/2 time signature. The Bells part continues in grand staff with the same key signature and time signature. Measure numbers 4, 5, 6, and 7 are indicated above the staves. Trills (*tr*) and Skat (*Sk*) are marked in the Oboe part.

CGB-126

\* The oboe part may be played by flute (one octave higher than written), violin, or any treble instrument.

8 9 10 11

12 13 14 15

16 17 18

19 20 21