



choristers guild

Holy Manna

Bells used: 2 octaves (19 bells)



Holy Manna
attr. William Moore, 19th cent.
arr. Kevin McChesney

Moderately ($\text{♩} = c. 88$)

1

2

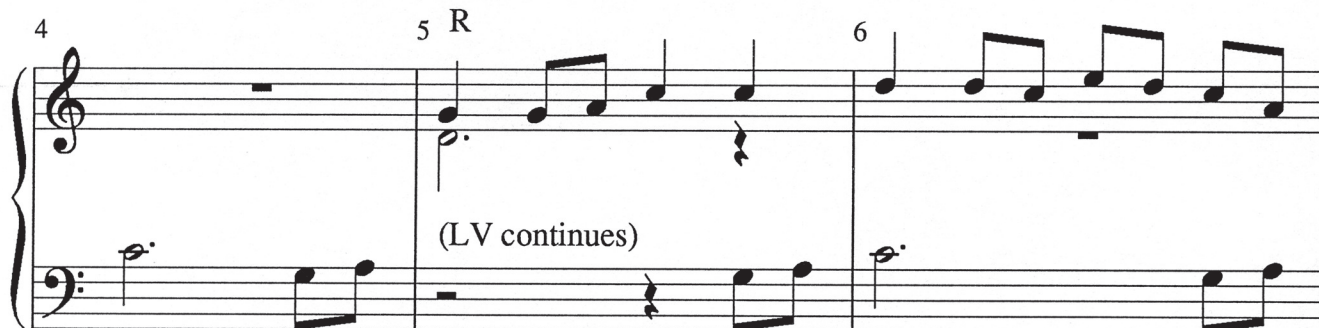
3



4

5 R

6



7

8

9



10 11 12

Musical notation for measures 10, 11, and 12. Measure 10 features a treble clef with a series of eighth-note chords. Measure 11 has a piano (p.) dynamic marking and a target symbol above the staff. Measure 12 ends with a target symbol. The bass clef contains a half note in measure 10 and eighth notes in measures 11 and 12.

13 14 15

LV R

Musical notation for measures 13, 14, and 15. Measure 13 has a right-hand (R) marking. Measures 14 and 15 feature a left-hand (LV) marking and a target symbol above the staff. The bass clef has a half note in measure 13 and eighth notes in measures 14 and 15.

16 17 18

LV

Musical notation for measures 16, 17, and 18. Measure 16 has a target symbol above the staff. Measure 17 has a piano (p.) dynamic marking. Measure 18 has a left-hand (LV) marking. The bass clef has eighth notes in measure 16, a half note in measure 17, and eighth notes in measure 18.

19 20 21

cresc. R LV

Musical notation for measures 19, 20, and 21. Measure 19 has a crescendo (cresc.) marking. Measure 20 has a right-hand (R) marking. Measure 21 has a left-hand (LV) marking. The bass clef has eighth notes in measure 19, a half note in measure 20, and eighth notes in measure 21. The time signature changes from 2/4 to 4/4 at the end of measure 21.