

# Elation

Joyous original handbell compositions for 2 or 3 octaves

by  
Kevin McChesney

## Contents

Jubilant Fanfare .....	3
Mallet Melody .....	6
<i>Percussive Praise</i> .....	6
Joyful Rhythm .....	12
Antiphonal Celebration .....	18
Jubilance .....	24

An edition for 3, 4 or 5 octaves is also available, code CGB1163.  
The two editions are fully compatible for festivals and other massed ringing events.

# Jubilant Fanfare

2 or 3 octaves  
Handbells used: 19, (28)

Handbell notation for Jubilant Fanfare. The music is written on a grand staff (treble and bass clefs). The melody consists of a series of eighth notes: G4, A4, B4, C5, D5, E5, F5, G5, A5, B5, C6, D6, E6, F6, G6, A6, B6, C7. There are two optional sections: one in the bass clef (G3, A3, B3, C4, D4, E4, F4, G4) and one in the treble clef (B6, C7, D7, E7, F7, G7, A7, B7).

2 octave choirs omit notes in ( ).

Kevin McChesney

Piano accompaniment for Jubilant Fanfare. The music is written on a grand staff (treble and bass clefs). The tempo is marked **Brightly** (♩ = 72). The first measure is marked **1** and **Brightly** (♩ = 72). The second measure is marked **2**. The third measure is marked **3** and **Sk**. The fourth measure is marked **Sk**. The piano part features a forte (**f**) dynamic and a left hand (**LV**) part. The right hand (**R**) part is marked with a wavy line.

Piano accompaniment for Jubilant Fanfare. The music is written on a grand staff (treble and bass clefs). The fifth measure is marked **5**. The sixth measure is marked **6**. The piano part features a forte (**f**) dynamic and a left hand (**LV**) part. The right hand (**R**) part is marked with a wavy line.

Piano accompaniment for Jubilant Fanfare. The music is written on a grand staff (treble and bass clefs). The seventh measure is marked **7**. The eighth measure is marked **8**. The piano part features a forte (**f**) dynamic and a left hand (**LV**) part. The right hand (**R**) part is marked with a wavy line.

Musical score for piano, measures 9-24. The score is written for two staves (treble and bass clef) in a key signature of one flat (B-flat). The tempo/mood is indicated as *mf* (mezzo-forte) at measure 21.

Measures 9-12: (opt. repeat) Sk (Skat) markings above the treble staff.

Measures 13-16: (mel.) (melodic) markings above the treble staff.

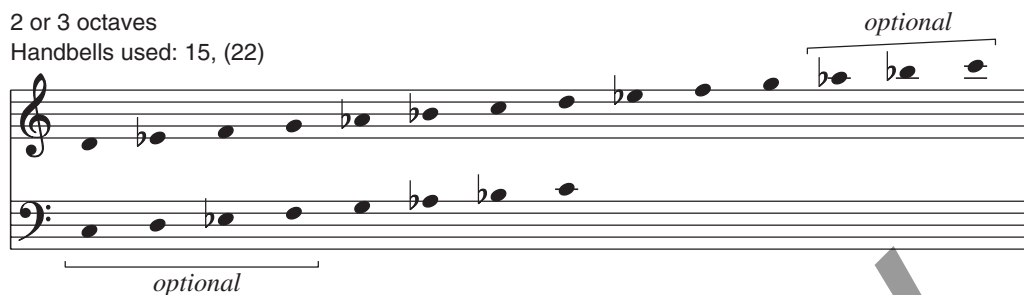
Measures 17-20: Sk (Skat) markings above the treble staff, and R (Ritardando) markings above the bass staff.

Measures 21-24: *mf* (mezzo-forte) marking above the treble staff.

# Mallet Melody

## Percussive Praise

2 or 3 octaves  
Handbells used: 15, (22)



All notes are to be played by malletting the bell as it rests on the padded table.

Kevin McChesney

1  $\bullet = 152-168$  2 3 4 5

*mf*

6 7 8 9 10

11 12 13 14 15

Copyright © 2003, this edition © 2019 Choristers Guild. All rights reserved. Printed in U.S.A.  
The original purchaser is granted permission reproduce this music.

Musical score for piano, measures 16 through 35. The score is written for two staves (treble and bass clef) in a key signature of three flats (B-flat, E-flat, A-flat). The tempo is marked 'dim.' (diminuendo) and the dynamics are marked 'p' (piano). The score is divided into four systems, each containing five measures. The measures are numbered 16 through 35. The notation includes chords, single notes, and rests. A large, diagonal 'PREVIEW' watermark is overlaid across the center of the page.

Measures 16-20: Treble clef has chords of F4, A4, C5 and F4, A4, C5. Bass clef has chords of B-flat3, D-flat4, F4 and B-flat3, D-flat4, F4. Measure 17 has a plus sign above the treble staff. Measure 18 has a plus sign above the treble staff. Measure 19 has a plus sign above the treble staff. Measure 20 has a plus sign above the treble staff.

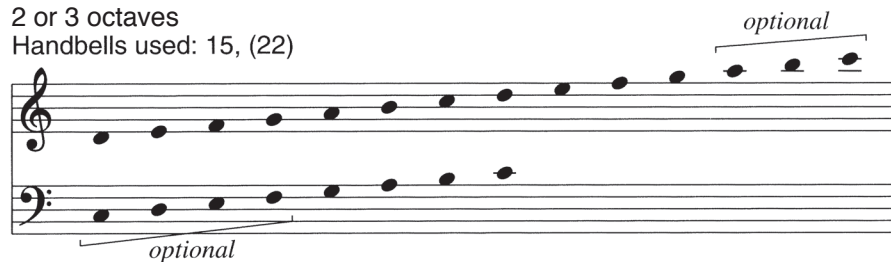
Measures 21-25: Treble clef has chords of F4, A4, C5 and F4, A4, C5. Bass clef has chords of B-flat3, D-flat4, F4 and B-flat3, D-flat4, F4. Measure 21 has a plus sign above the treble staff. Measure 22 has a plus sign above the treble staff. Measure 23 has a plus sign above the treble staff. Measure 24 has a plus sign above the treble staff. Measure 25 has a plus sign above the treble staff.

Measures 26-30: Treble clef has chords of F4, A4, C5 and F4, A4, C5. Bass clef has chords of B-flat3, D-flat4, F4 and B-flat3, D-flat4, F4. Measure 26 has a plus sign above the treble staff. Measure 27 has a plus sign above the treble staff. Measure 28 has a plus sign above the treble staff. Measure 29 has a plus sign above the treble staff. Measure 30 has a plus sign above the treble staff.

Measures 31-35: Treble clef has chords of F4, A4, C5 and F4, A4, C5. Bass clef has chords of B-flat3, D-flat4, F4 and B-flat3, D-flat4, F4. Measure 31 has a plus sign above the treble staff. Measure 32 has a plus sign above the treble staff. Measure 33 has a plus sign above the treble staff. Measure 34 has a plus sign above the treble staff. Measure 35 has a plus sign above the treble staff.

# Joyful Rhythm

2 or 3 octaves  
Handbells used: 15, (22)



2 octave choirs omit notes in ( ).

Kevin McChesney

**Energetically** (♩ = 144-176)

1 2 3 4

5 6 7 8

9 (R) 10 11 12

13 14 15 16

Measures 13-16 of a piano score. The music is in treble and bass clefs. Measures 13-14 feature a melody in the treble with a bass accompaniment of chords and eighth notes. Measures 15-16 feature a melody in the treble with a bass accompaniment of chords and eighth notes. A slur connects measures 15 and 16.

17 18 19 20 21

Measures 17-21 of a piano score. The music is in treble and bass clefs. Measures 17-19 feature a melody in the treble with a bass accompaniment of chords and eighth notes. Measures 20-21 feature a melody in the treble with a bass accompaniment of chords and eighth notes. A slur connects measures 20 and 21.

22 23 24 25

Measures 22-25 of a piano score. The music is in treble and bass clefs. Measures 22-23 feature a melody in the treble with a bass accompaniment of chords and eighth notes. Measures 24-25 feature a melody in the treble with a bass accompaniment of chords and eighth notes. A slur connects measures 24 and 25. The word *cresc.* is written below measure 24, and the word *f* is written below measure 25.

26 27 28 29

Measures 26-29 of a piano score. The music is in treble and bass clefs. Measures 26-27 feature a melody in the treble with a bass accompaniment of chords and eighth notes. Measures 28-29 feature a melody in the treble with a bass accompaniment of chords and eighth notes. A slur connects measures 28 and 29.

# Antiphonal Celebration

2 or 3 octaves  
Handbells used: 19, (28)

2 octave choirs omit notes in ( ).

Kevin McChesney



7 8 9

10 11 12

13 14 15

16 17 18

*mf*

The image displays a musical score for piano, spanning measures 7 through 18. The score is written for two staves, treble and bass, in a key signature of two flats (B-flat and E-flat). The notation includes various musical symbols such as notes, rests, and dynamic markings. A large, diagonal watermark reading 'PREVIEW' is overlaid across the center of the page. The score is organized into four systems, each containing three measures. The first system (measures 7-9) shows a complex texture with many beamed notes. The second system (measures 10-12) includes a dynamic marking of *mf* (mezzo-forte) in measure 11. The third system (measures 13-15) continues the complex texture. The fourth system (measures 16-18) concludes the excerpt with a final chord in measure 18.

# Jubilance

2 or 3 octaves  
Handbells used: 23, (34)

Handbell musical notation for 'Jubilance'. The score is written for two staves (treble and bass clef). The key signature has two flats (B-flat and E-flat). The tempo is 'Lively' with a quarter note equal to 176-184 beats and a half note equal to 92 beats. The music consists of a series of eighth and sixteenth notes. There are two 'optional' markings: one under the first four measures of the bass staff and another under the last four measures of the treble staff.

2 octave choirs omit notes in ( ).

Kevin McChesney

Lively (♩ = 176-184; ♪ = 92)

Piano musical notation for 'Jubilance'. The score is written for two staves (treble and bass clef). The key signature has two flats (B-flat and E-flat). The tempo is 'Lively' with a quarter note equal to 176-184 beats and a half note equal to 92 beats. The music consists of a series of eighth and sixteenth notes. There are nine measures in total, numbered 1 through 9. Measure 1 has a 'mf' marking. Measure 2 has a '\*' marking. Measure 3 has a '(R)' marking. Measure 4 has a 'R' marking. There are staccato markings (vertical lines with downward-pointing triangles) on several notes throughout the piece.

\* All staccato notes may be played using TD, PI, light martellato, or mallets.

Copyright © 2000, this edition © 2019 Choristers Guild. All rights reserved. Printed in U.S.A.  
The original purchaser is granted permission reproduce this music.

10 11 12

13 14 15

16 17 18

19 20 21

R

The image displays a musical score for piano, spanning measures 10 to 21. The score is written for two staves, treble and bass, in a key signature of two flats (B-flat and E-flat). The notation includes various musical symbols such as notes, rests, and dynamic markings. A large, diagonal watermark reading 'PREVIEW' is overlaid across the center of the page. The measures are numbered 10 through 21, with measure 15 containing a 'R' marking. The score is organized into four systems, each containing three measures. The first system (measures 10-12) shows a melodic line in the treble staff and a supporting bass line. The second system (measures 13-15) continues the melodic development. The third system (measures 16-18) features more complex chordal textures. The fourth system (measures 19-21) concludes the sequence with a final chord in measure 21.