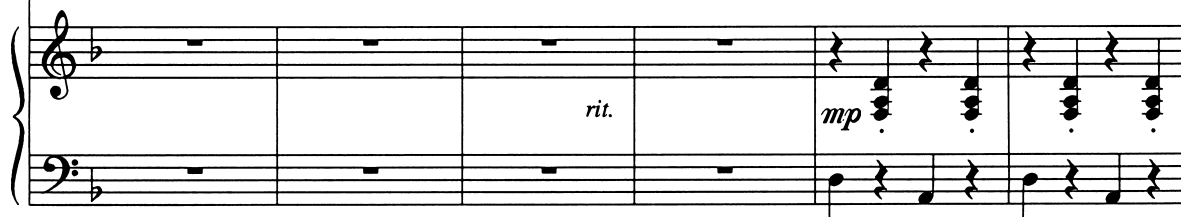


to the Christ the King Choirs, Mesa, Arizona

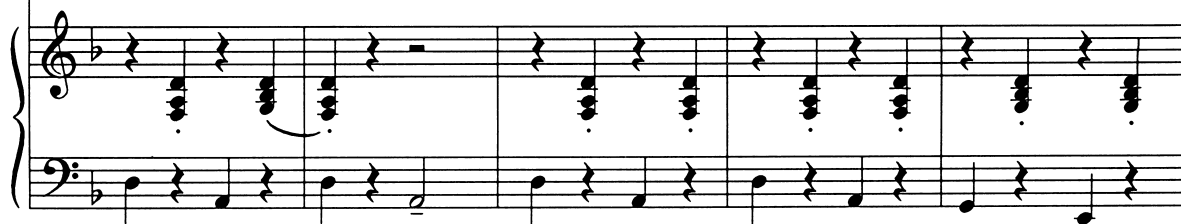
Rejoice, Rejoice, Believers

Laurentius, Laurentii, 1660-1722;
tr. Sarah B. Findlater, 1823-1907, alt.

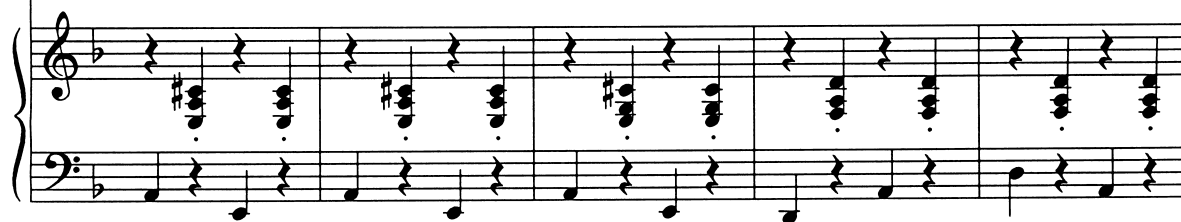
Jeffrey Honoré

Freely ($\text{♩} = \text{c. } 60$)Recorder or
Flute (8va)Women *mp*

1. Re - joi - ce, re - joi - ce, be - liev - ers, and let your lights ap -



pear; the eve - ning is ad - vanc - ing, and dark - er night is near. The

Copyright © 1997 Choristers Guild. All rights reserved. Printed in U.S.A.
Reproduction in any portion or form is prohibited without publisher's permission.

The CCLI license does not grant permission to photocopy this music.

28

bride - groom is a - ris - ing and soon is draw - ing nigh. Up, pray and watch and

33

wres - tle; at mid - night comes the cry.

38

Men *mp*

2. The watch - ers on the moun - tain pro - claim the bride - groom

42

near; go forth as he ap - proach - es with al - le - lu - ias

clear. The mar-riage feast is wait-ing; the gates wide o-pen stand. A -

rise, O heirs of glo-ry; the bride-groom is at hand.

Women *mf*

Men *mf*

3. The saints, who here in pa-tience their cross and suf-f'rings

3. The saints, who here in pa-tience their cross and suf-f'rings

Tambourine (optional)

mp

61

bore, shall live and reign for - ev - er when sor - row is no
bore, shall live and reign for - ev - er when sor - row is no

This system contains measures 61 through 64. It features a vocal line with lyrics, a piano accompaniment with chords and a bass line, and a drum line with a steady beat. The lyrics are: "bore, shall live and reign for - ev - er when sor - row is no".

65

more. A - round the throne of glo - ry the Lamb they shall be -
more. A - round the throne of glo - ry the Lamb they shall be -

This system contains measures 65 through 68. It features a vocal line with lyrics, a piano accompaniment with chords and a bass line, and a drum line with a steady beat. The lyrics are: "more. A - round the throne of glo - ry the Lamb they shall be -".