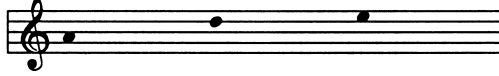


Prepare a Way for the Lord!

Advent

Optional handbells used: 2 octaves (3 bells)



Michael Bedford

Michael Bedford

With vitality (♩ = 72)

HB

mf

Voices *mf*

Pre - pare a way for the Lord! — Pre -

Kybd. *mf*

5 6 7 8

pare a way for the Lord! — Get read - y, get read - y, he's

Copyright © 1995 Choristers Guild. All rights reserved. Printed in U.S.A.
 Reproduction in any portion or form is prohibited without publisher's permission.

The copying of this music is prohibited by law. A CCLI license does NOT cover choral music.

9 1. 10 11 2. 12 13

(bells tacet to m. 29)

com - ing soon!___ Pre - com - ing soon!___ We light the Ad - vent

14 15 16 17

can - dles, we light them one___ by one;___ we light the Ad - vent

18 19 20 21

can - dles, for God's own Son!___ We light the Ad - vent

22 23 24

can - dles and then we join to say, "Make

25 26 27 28

room in your hearts for Je - sus who comes on Christ - mas Day!" Pre -

29 30 31 32

pare a way for the Lord! Pre - pare a way for the Lord! Get

1. 33 34 35 36

read - y, get read - y, he's com - ing soon! Pre -

Detailed description: This system contains the first four measures of the piece. It features a vocal line with lyrics, a piano accompaniment, and a grand staff. The key signature has two sharps (F# and C#). Measure numbers 33, 34, 35, and 36 are indicated above the vocal staff. A first ending bracket spans all four measures.

2. 37 38 39 40

read - y! Get read - y! He's

Detailed description: This system contains measures 37 through 40. It features a vocal line with lyrics, a piano accompaniment, and a grand staff. Measure numbers 37, 38, 39, and 40 are indicated above the vocal staff. A second ending bracket spans all four measures.

41 42 43 *rit.* 44

com - ing soon!

rit.

Detailed description: This system contains the final four measures of the piece. It features a vocal line with lyrics, a piano accompaniment, and a grand staff. Measure numbers 41, 42, 43, and 44 are indicated above the vocal staff. Measure 43 is marked with a *rit.* (ritardando) instruction. Measure 44 ends with a fermata. The piano accompaniment also includes a *rit.* instruction in measure 43.