

# Silent Night

## Handbell Duet or Trio

3 octaves  
Handbells used: 11

Part I

Handbells used: 7

Part II

Handbells used: 6

Part III\*

*STILLE NACHT*  
Franz Gruber, 1787-1863  
arr. Cathy Moglebust (ASCAP)

**Gently** (♩ = ca. 76)

1 2 3 4 5

Handbell Duet or Trio

*mf*

6 7 8 9 10

*poco rit.* *a tempo*

*poco rit.* *a tempo* LV LV

*poco rit.* *a tempo*

\* Part III is optional.

Separate handbell parts are found on pages 8-13.  
Piano accompaniment is found on page 14.

Also available for download at [www.choristersguild.org](http://www.choristersguild.org):

Handbell solo with piano paccaniment, CGBD121. (The optional string parts and accompaniment tracks are for both the solo and the duet/trio versions.)

Optional reproducible parts for 2 violins, viola, violoncello, contrabass, electronic keyboard string reduction, and full score, code CGRP61.

Piano mp3 accompaniment track, code CGBD121a.

String ensemble mp3 accompaniment track, code CGBD121as.

String ensemble and piano mp3 accompaniment track, code CGBD121aps.

11 12 13 14 15

Handbell Duet or Trio notation for measures 11-15. The score is in treble and bass clefs with a key signature of one sharp (F#). Part I (top staff) contains whole notes. Part II (middle staff) contains eighth notes with a circled cross symbol and 'LV' below. Part III (bottom staff) contains whole notes.

16 17 18 19 20

Handbell Duet or Trio notation for measures 16-20. The score is in treble and bass clefs with a key signature of one sharp (F#). Part I (top staff) contains whole notes. Part II (middle staff) contains eighth notes with a circled cross symbol and 'LV' below. Part III (bottom staff) contains whole notes.

21 22 23 24

Handbell Duet or Trio notation for measures 21-24. The score is in treble and bass clefs with a key signature of one sharp (F#). Part I (top staff) contains whole notes. Part II (middle staff) contains eighth notes with a circled cross symbol and 'LV' below. Part III (bottom staff) contains whole notes, with 'LV' and 'R' labels below the notes in measures 21 and 24 respectively.

25 26 27 28

Handbell Duet or Trio notation for measures 25-28. The score is in 3/4 time with a key signature of one sharp (F#). It features three staves: I (treble clef), II (treble clef), and III (bass clef). Measure 25: I has a half note G4, II has a quarter rest and a quarter note G4, III has a half note G2. Measure 26: I has a dotted quarter note A4, II has a quarter rest and a quarter note A4, III has a half note A2. Measure 27: I has a quarter note B4, II has a quarter rest and a quarter note B4, III has a half note B2. Measure 28: I has a dotted half note C5, II has a quarter rest and a quarter note C5, III has a half note C3. A large 'PREVIEW' watermark is overlaid on the page.

29 30 31 32

Handbell Duet or Trio notation for measures 29-32. Measure 29: I has a half note D5, II has a quarter rest and a quarter note D5, III has a half note D3. Measure 30: I has a dotted quarter note E5, II has a quarter rest and a quarter note E5, III has a half note E3. Measure 31: I has a quarter note F#5, II has a quarter rest and a quarter note F#5, III has a half note F#3. Measure 32: I has a dotted half note G5, II has a quarter rest and a quarter note G5, III has a half note G3. A large 'PREVIEW' watermark is overlaid on the page.

33 34 35 36

Handbell Duet or Trio notation for measures 33-36. Measure 33: I has a half note A5, II has a quarter rest and a quarter note A5, III has a half note A3. Measure 34: I has a dotted quarter note B5, II has a quarter rest and a quarter note B5, III has a half note B3. Measure 35: I has a quarter note C6, II has a quarter rest and a quarter note C6, III has a half note C4. Measure 36: I has a dotted half note C6, II has a quarter rest and a quarter note C6, III has a half note C4. The tempo marking *poco rit.* appears in the right margin of measure 36. A large 'PREVIEW' watermark is overlaid on the page.

# Silent Night

Handbell Duet or Trio

Part I

3 octaves

Handbells used: 11



STILLE NACHT

Franz Gruber, 1787-1863  
arr. Cathy Moklebust (ASCAP)

Gently (♩ = ca. 76)

1 2 3 4 5

*mf*

6 7 8 9 10

*poco rit.* *a tempo*

11 12 13 14 15

16 17 18 19 20

21 22 23 24 25

26 27 28 29 30

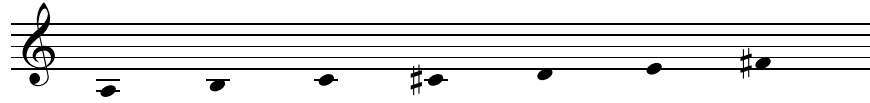
31 32 33 34 35

# Silent Night

Handbell Duet or Trio

Part II

3 octaves  
Handbells used: 7



Gently (♩ = ca. 76)

STILLE NACHT  
Franz Gruber, 1787-1863  
arr. Cathy Moglebust (ASCAP)

1 2 3 4 5 6 7

8 9 10 11 12 13

14 15 16 17 18 19

20 21 22 23 24 25

26 27 28 29 30 31

32 33 34 35 36

*mf*

*poco rit.* *a tempo*

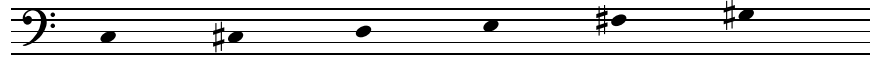
*R poco rit.*

# Silent Night

Handbell Duet or Trio

Part III  
(optional)

3 octaves  
Handbells used: 6



*STILLE NACHT*  
Franz Gruber, 1787-1863  
arr. Cathy Moglebust (ASCAP)

Gently (♩ = ca. 76)

1 2 3 4 5 6

*mf*

7 8 9 10 11 12

*poco rit. a tempo*

13 14 15 16 17 18

19 20 21 22 23 24

LV LV R

25 26 27 28 29 30

LV R

31 32 33 34 35 36

*poco rit.*

# Silent Night

## Handbell Duet or Trio

3 octaves  
Handbells used: 18, (24)

optional

*STILLE NACHT*  
Franz Gruber, 1787-1863  
arr. Cathy Moglebust (ASCAP)

Handbell Duet or Trio\*

Gently (♩ = ca. 76)

1 2 3 4 5

*mf*

Piano

Gently (♩ = ca. 76)

*mp*

Pedal harmonically

Hb.

6 7 8 9 10

*poco rit.* *a tempo*

LV LV

Pno.

*poco rit.* *a tempo*

\* Part III (lowest part) is optional.

11 12 13 14 15

Hb.

Pno.

16 17 18 19 20

Hb.

Pno.

21 22 23 24

Hb.

Pno.