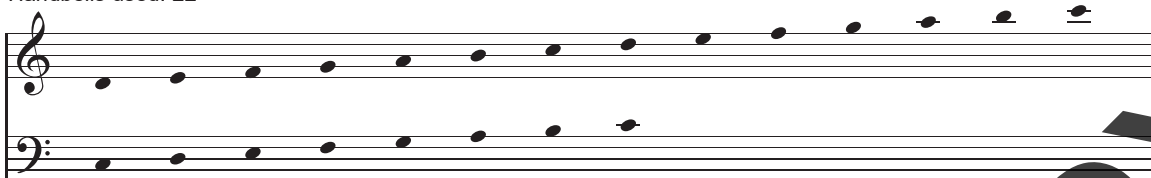


Naught Be All Else

Lord of All Hopefulness

3

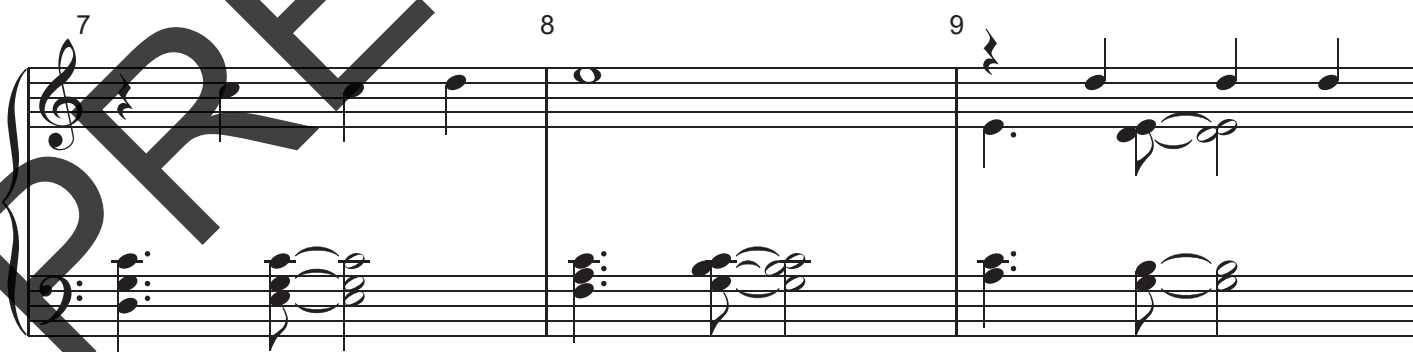
3 octaves
Handbells used: 22



Mallets are required for handbells D5 and E5.

SLANE
Irish tune
arr. Chris D. Burton (ASCAP)

With excitement (♩ = 120)



An edition for 4, 5, or 6 octaves is available, code CGB1362. The editions are compatible for massed ringing.

Copyright © 2024 Choristers Guild. All rights reserved. Printed in U.S.A.
Reproduction of all or any portion in any form is prohibited without permission of the publisher.

The copying of this music is prohibited by law and is not covered by CCLI or OneLicense.net.

CGB1361

10 11 12

Musical notation for measures 10, 11, and 12. Measure 10: Treble clef has a half note G4, quarter note A4, and quarter note B4. Bass clef has a half note chord of C3-E3-G3 and a half note chord of A2-C3-E3. Measure 11: Treble clef has a quarter rest, quarter note A4, and quarter note B4. Bass clef has a half note chord of C3-E3-G3 and a half note chord of A2-C3-E3. Measure 12: Treble clef has a half note chord of G4-B4 and a half note chord of A4-B4. Bass clef has a half note chord of C3-E3-G3 and a half note chord of A2-C3-E3.

13 14 15

Musical notation for measures 13, 14, and 15. Measure 13: Treble clef has a quarter rest, quarter note G4, and quarter note A4. Bass clef has a half note chord of C3-E3-G3 and a half note chord of A2-C3-E3. Measure 14: Treble clef has a half note chord of G4-B4 and a half note chord of A4-B4. Bass clef has a half note chord of C3-E3-G3 and a half note chord of A2-C3-E3. Measure 15: Treble clef has a half note G4, quarter note A4, and quarter note B4. Bass clef has a half note chord of C3-E3-G3 and a half note chord of A2-C3-E3.

16 17 18

Musical notation for measures 16, 17, and 18. Measure 16: Treble clef has a half note G4, quarter note A4, and quarter note B4. Bass clef has a half note chord of C3-E3-G3 and a half note chord of A2-C3-E3. Measure 17: Treble clef has a half note G4, quarter note A4, and quarter note B4. Bass clef has a half note chord of C3-E3-G3 and a half note chord of A2-C3-E3. Measure 18: Treble clef has a quarter rest, quarter note G4, and quarter note A4. Bass clef has a half note chord of C3-E3-G3 and a half note chord of A2-C3-E3.

19 20 21

Musical notation for measures 19, 20, and 21. Measure 19: Treble clef has a half note G4, quarter note A4, and quarter note B4. Bass clef has a half note chord of C3-E3-G3 and a half note chord of A2-C3-E3. Measure 20: Treble clef has a half note chord of G4-B4 and a half note chord of A4-B4. Bass clef has a half note chord of C3-E3-G3 and a half note chord of A2-C3-E3. Measure 21: Treble clef has a half note G4, quarter note A4, and quarter note B4. Bass clef has a half note chord of C3-E3-G3 and a half note chord of A2-C3-E3.

22 23 24

Measure 22: Treble clef has a half note G4, a half note A4, and a half note B4. Bass clef has a dotted quarter note G2, an eighth note A2, a dotted quarter note B2, and an eighth note C3. Measure 23: Treble clef has a whole note G4. Bass clef has a dotted quarter note G2, an eighth note A2, a dotted quarter note B2, and an eighth note C3. Measure 24: Treble clef has a quarter note G4, an eighth note A4, a quarter note B4, an eighth note A4, a quarter note G4, and an eighth note F#4. Bass clef has a dotted quarter note G2, an eighth note A2, a dotted quarter note B2, and an eighth note C3. A dynamic marking *mf* is present above the first eighth note of the bass line in measure 24.

25 26

Measure 25: Treble clef has a quarter note G4, an eighth note A4, a quarter note B4, an eighth note A4, a quarter note G4, and an eighth note F#4. Bass clef has a dotted quarter note G2, an eighth note A2, a dotted quarter note B2, and an eighth note C3. Measure 26: Treble clef has a quarter note G4, an eighth note A4, a quarter note B4, an eighth note A4, a quarter note G4, and an eighth note F#4. Bass clef has a dotted quarter note G2, an eighth note A2, a dotted quarter note B2, and an eighth note C3.

27 28

Measure 27: Treble clef has a quarter note G4, an eighth note A4, a quarter note B4, an eighth note A4, a quarter note G4, and an eighth note F#4. Bass clef has a dotted quarter note G2, an eighth note A2, a dotted quarter note B2, and an eighth note C3. Measure 28: Treble clef has a quarter note G4, an eighth note A4, a quarter note B4, an eighth note A4, a quarter note G4, and an eighth note F#4. Bass clef has a dotted quarter note G2, an eighth note A2, a dotted quarter note B2, and an eighth note C3.

29 30

Measure 29: Treble clef has a quarter note G4, an eighth note A4, a quarter note B4, an eighth note A4, a quarter note G4, and an eighth note F#4. Bass clef has a dotted quarter note G2, an eighth note A2, a dotted quarter note B2, and an eighth note C3. Measure 30: Treble clef has a quarter note G4, an eighth note A4, a quarter note B4, an eighth note A4, a quarter note G4, and an eighth note F#4. Bass clef has a dotted quarter note G2, an eighth note A2, a dotted quarter note B2, and an eighth note C3.

39 40

PREVIEW COPY

41 42

LV

43 44 45

R

46 47

PREVIEW COPY

57 58

59 60

61 62

Sk

63 64

65 66

PREVIEW COPY

67 68

PREVIEW COPY

69 70

PREVIEW COPY

71 72

PREVIEW COPY